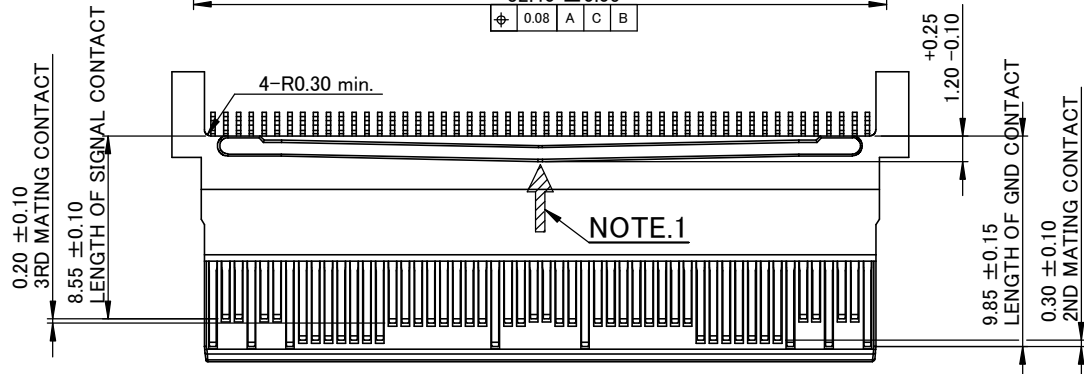
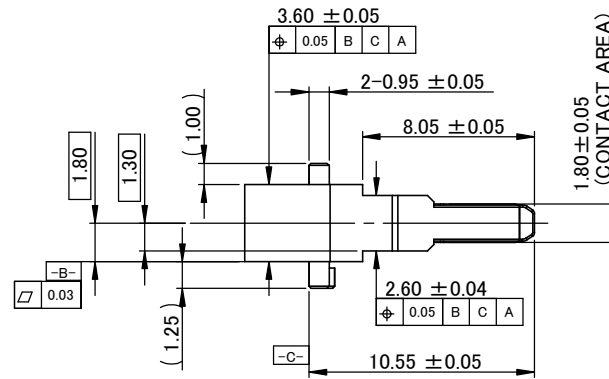
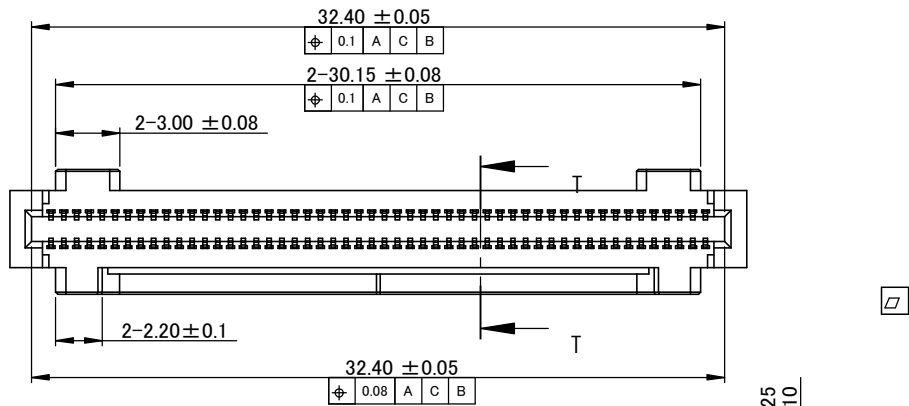
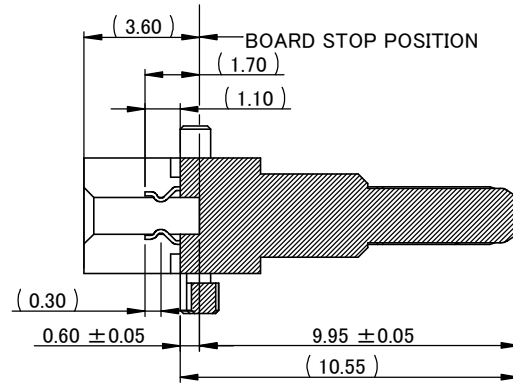
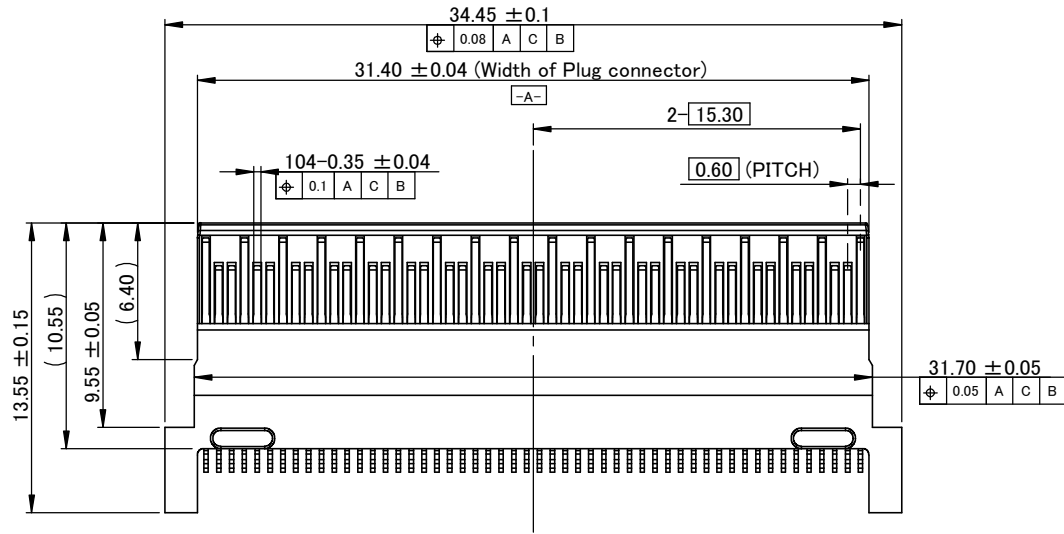


SECTION



NOTE.1

NOTE  
1. RECOMMEND: SPRING STIFFNESS TO BE 3.5-7.0N/mm IN NOTED DIRECTION.

山一電機株式会社 YAMAICHI ELECTRONICS Co.,Ltd.	CLASS	CFP2-BASELINE-DRAWING	
	TITLE	PLUG CONNECTOR	REV. 1B
	Sheet No.	1/14	

1 2 3 4 5 6 7 8

A

A

B

B

C

C

D

D

E

E

F

F

$32.25 \pm 0.1$

-A-

$0.6 \times 51 = 30.60$

2-  $15.30$

$0.60$

2-C  $0.50 \pm 0.10$

1.20

-B-

$1.00 \pm 0.03$

$\phi$  0.05 B A C

$0.35 \pm 0.03$


$\phi$  0.05 A B C

-C-

$0.40 \pm 0.15$

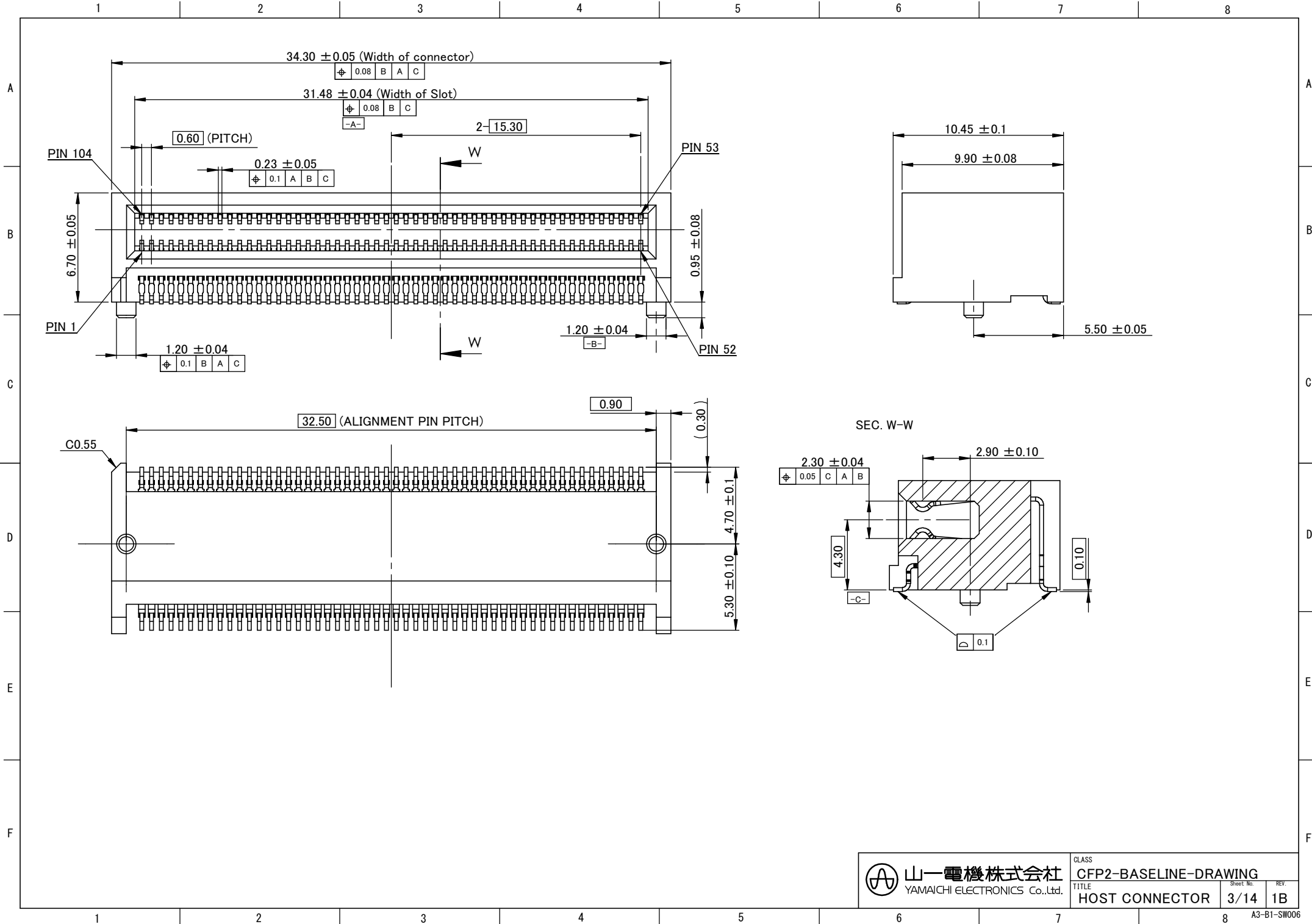
$30.00^\circ$

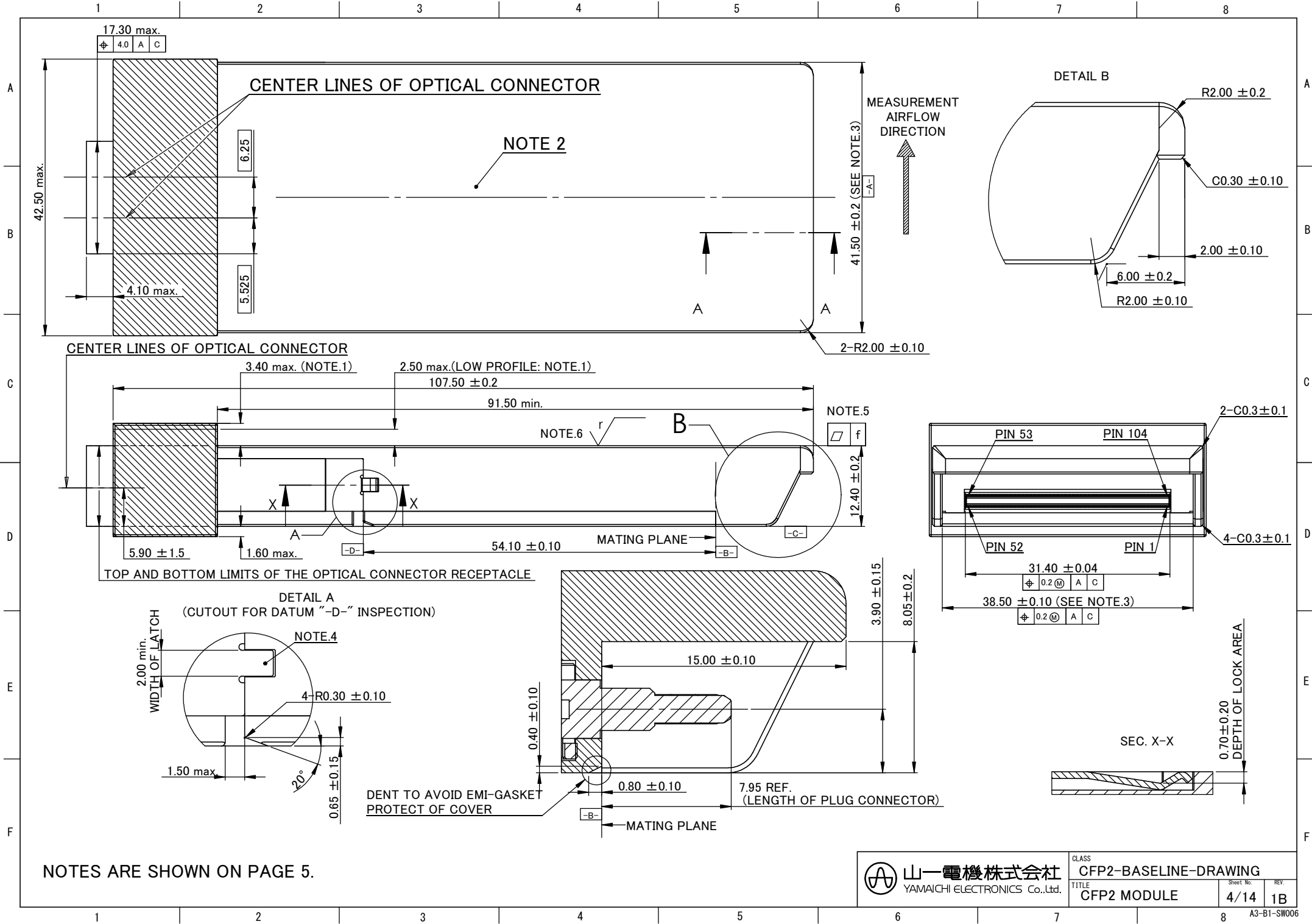
$1.00 \pm 0.10$

 山一電機株式会社 YAMAICHI ELECTRONICS Co.,Ltd.	CLASS	CFP2-BASELINE-DRAWING	
	TITLE	MODULE BOARD	REV.
	Sheet No.	2/14	1B

1 2 3 4 5 6 7 8

A3-B1-SW006



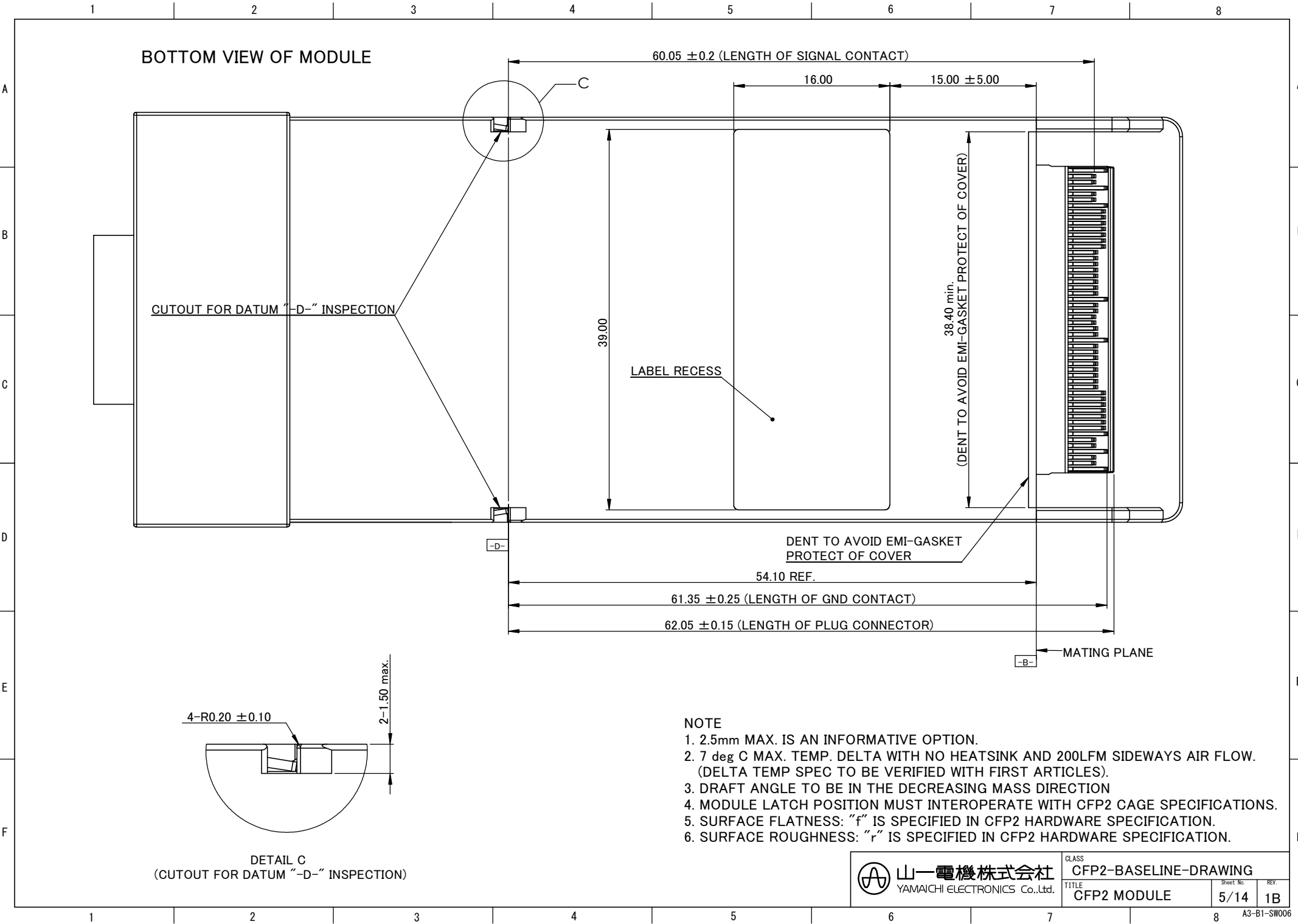


NOTES ARE SHOWN ON PAGE 5.

 山一電機株式会社 YAMAICHI ELECTRONICS Co.,Ltd.	CLASS	CFP2-BASELINE-DRAWING	
	TITLE	CFP2 MODULE	REV.
	Sheet No.	4/14	1B

A3-B1-SW006

**BOTTOM VIEW OF MODULE**



CUTOUT FOR DATUM "-D-" INSPECTION

LABEL RECESS

38.40 min.  
(DENT TO AVOID EMI-GASKET PROTECT OF COVER)

DENT TO AVOID EMI-GASKET PROTECT OF COVER


MATING PLANE

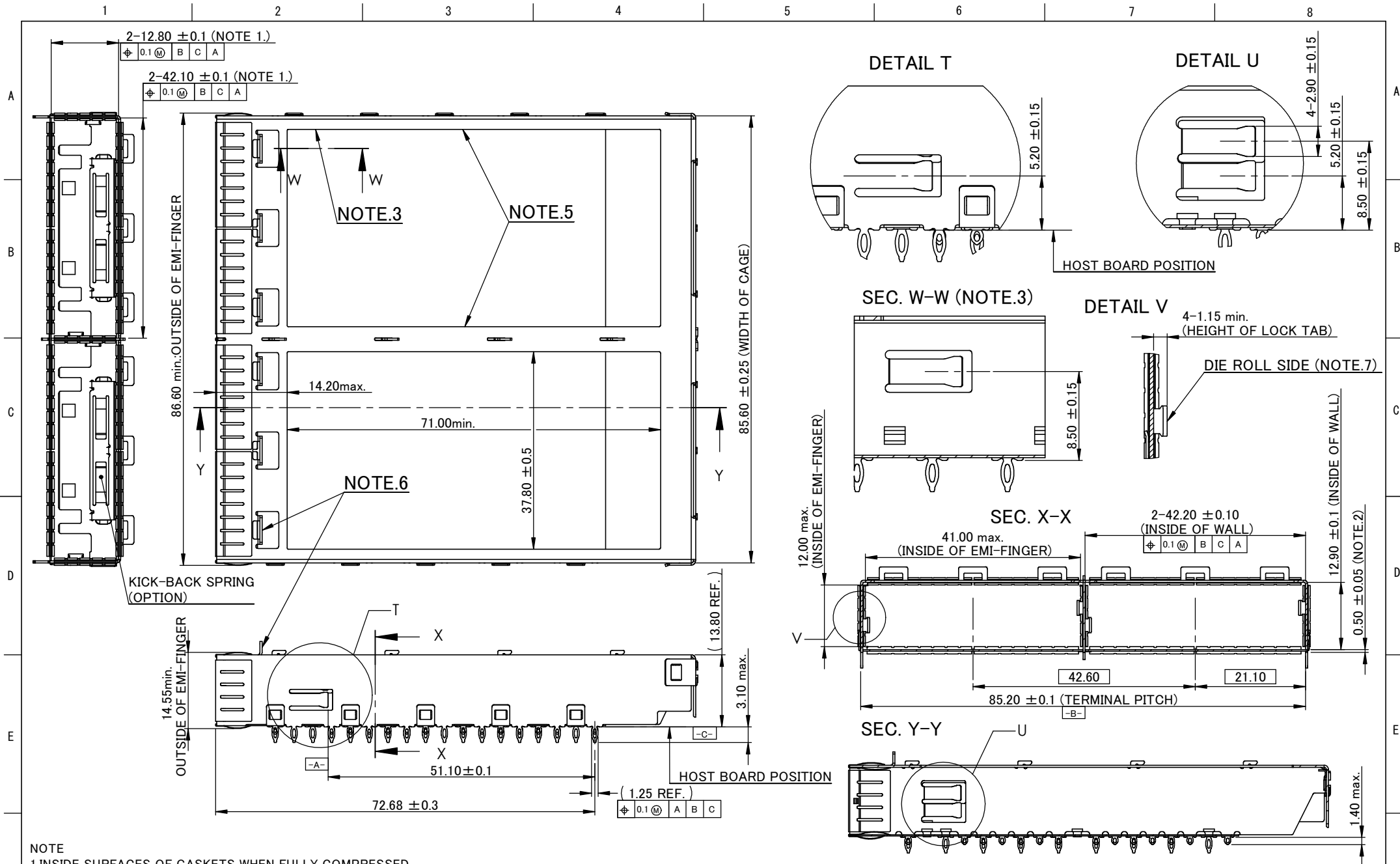
4-R0.20 ± 0.10

2-1.50 max.

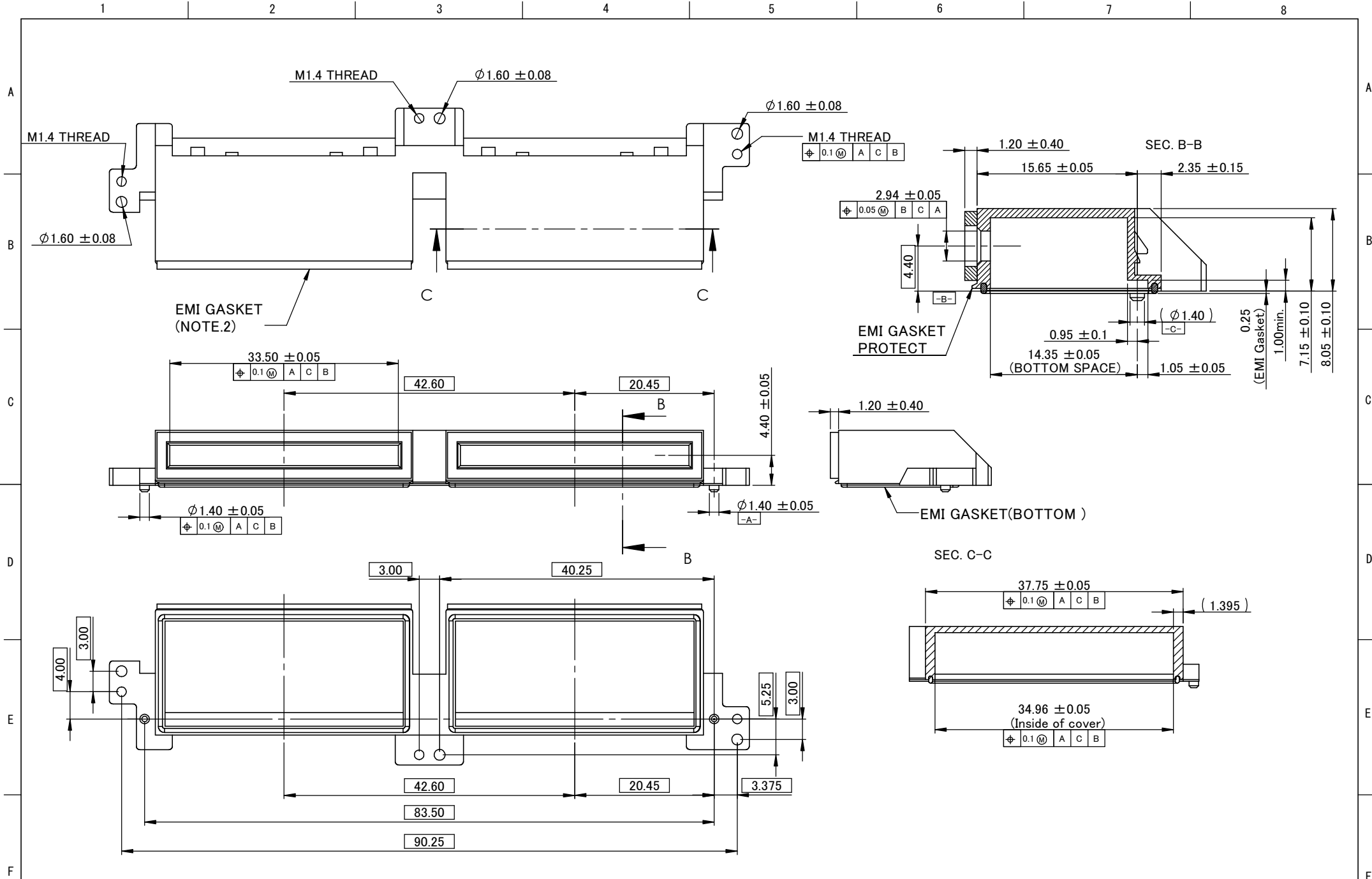
DETAIL C  
(CUTOUT FOR DATUM "-D-" INSPECTION)

- NOTE**
- 2.5mm MAX. IS AN INFORMATIVE OPTION.
  - 7 deg C MAX. TEMP. DELTA WITH NO HEATSINK AND 200LFM SIDEWAYS AIR FLOW. (DELTA TEMP SPEC TO BE VERIFIED WITH FIRST ARTICLES).
  - DRAFT ANGLE TO BE IN THE DECREASING MASS DIRECTION
  - MODULE LATCH POSITION MUST INTEROPERATE WITH CFP2 CAGE SPECIFICATIONS.
  - SURFACE FLATNESS: "f" IS SPECIFIED IN CFP2 HARDWARE SPECIFICATION.
  - SURFACE ROUGHNESS: "r" IS SPECIFIED IN CFP2 HARDWARE SPECIFICATION.

 山一電機株式会社 YAMAICHI ELECTRONICS Co.,Ltd.	CLASS <b>CFP2-BASELINE-DRAWING</b>	Sheet No. <b>5/14</b>	REV. <b>1B</b>
	TITLE <b>CFP2 MODULE</b>	A3-B1-SW006	



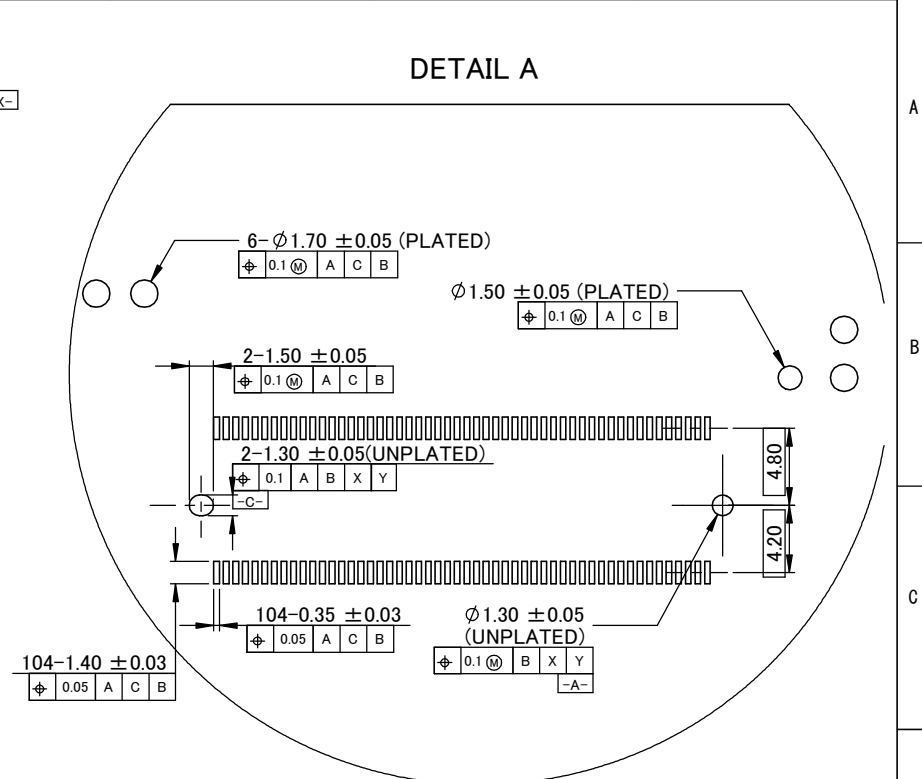
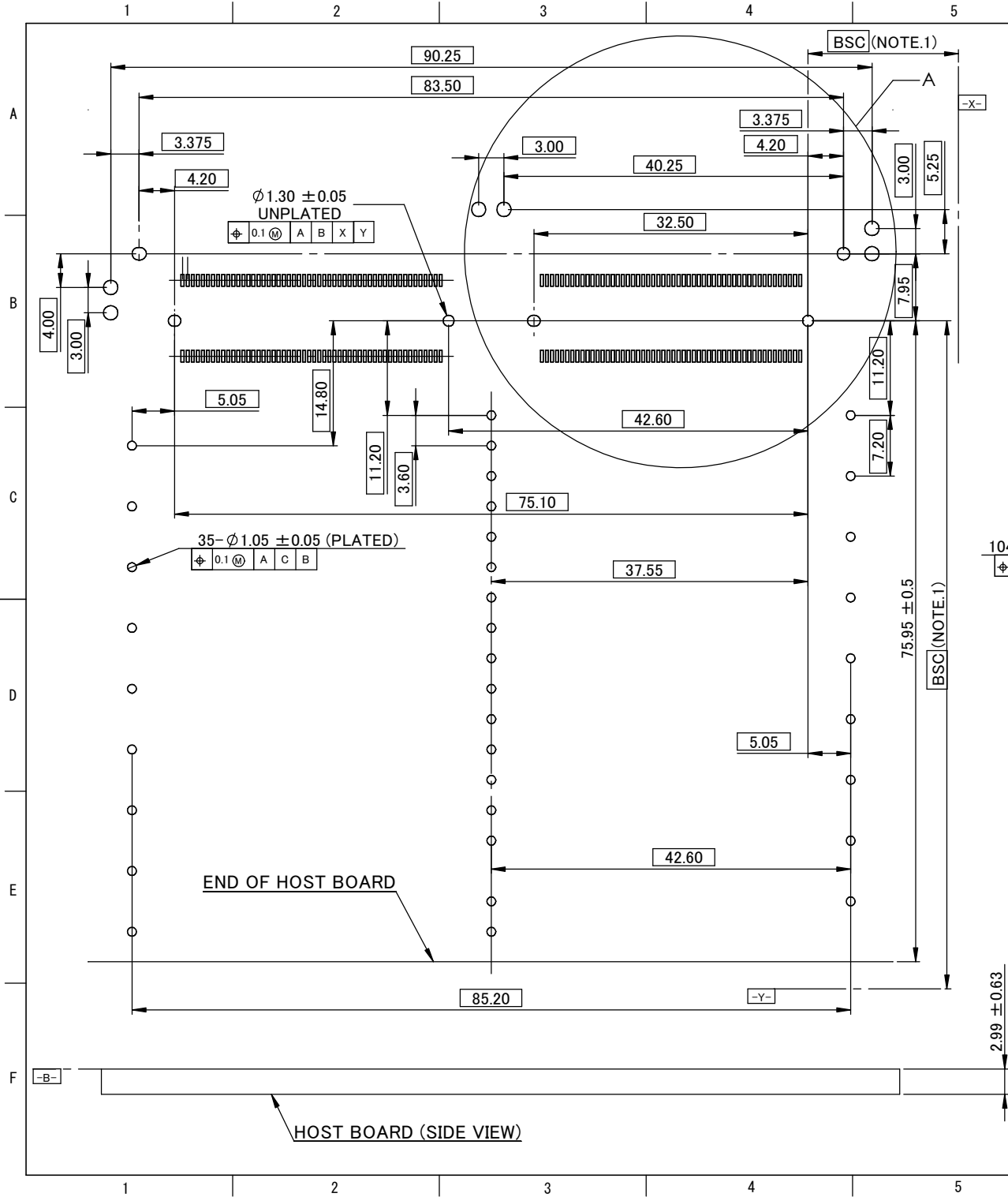
- NOTE
- 1.INSIDE SURFACES OF GASKETS WHEN FULLY COMPRESSED.
  - 2.SPACE OF MODULE SLIDING PLATE AND HOST BOARD.
  - 3."SEC. W-W" SHOWS OTHER SIDE LOCK TAB OF DETAIL T.
  - 4.THE TOTAL STIFFNESS OF EMI-GASKET AND KICK-BACK SPRING IS TBD (REF. 24.5 MIN. - 45.9 MAX. [N/mm]).
  - 5.HOST THERMAL DESIGN IS LEFT UP TO SYSTEM OEMs. THIS INCLUDES VARYING HOST CAGE DESIGN PARAMETERS.
  - 6.CAGE LOCK IS OPTIONAL. WITHOUT THE CAGE LOCK, A DIFFERENT HEATSINK DESIGN IS REQUIRED AS THE ONE SHOWN WILL NOT WORK.
  - 7.INSIDE OF CAGE SHALL BE USED A DIE ROLL SIDE OF MATERIAL EXCEPT FOR ONE SIDE OF CENTER WALL.



NOTE  
 1. MAXIMUM DELTA DEFLECTION OF HOST CONNECTOR COVER AFTER SCREW MOUNT ON HOST BOARD IS 0.02mm.  
 2. GASKET TO MEET MINIMUM PEEL STRENGTH SPECIFIED IN CFP2 HARDWARE SPECIFICATION.

 <b>山一電機株式会社</b> YAMAICHI ELECTRONICS Co.,Ltd.	CLASS	CFP2-BASELINE-DRAWING	
	TITLE	HOST CONNECTOR COVER	Sheet No. REV.
			7/14

A3-B1-SW006

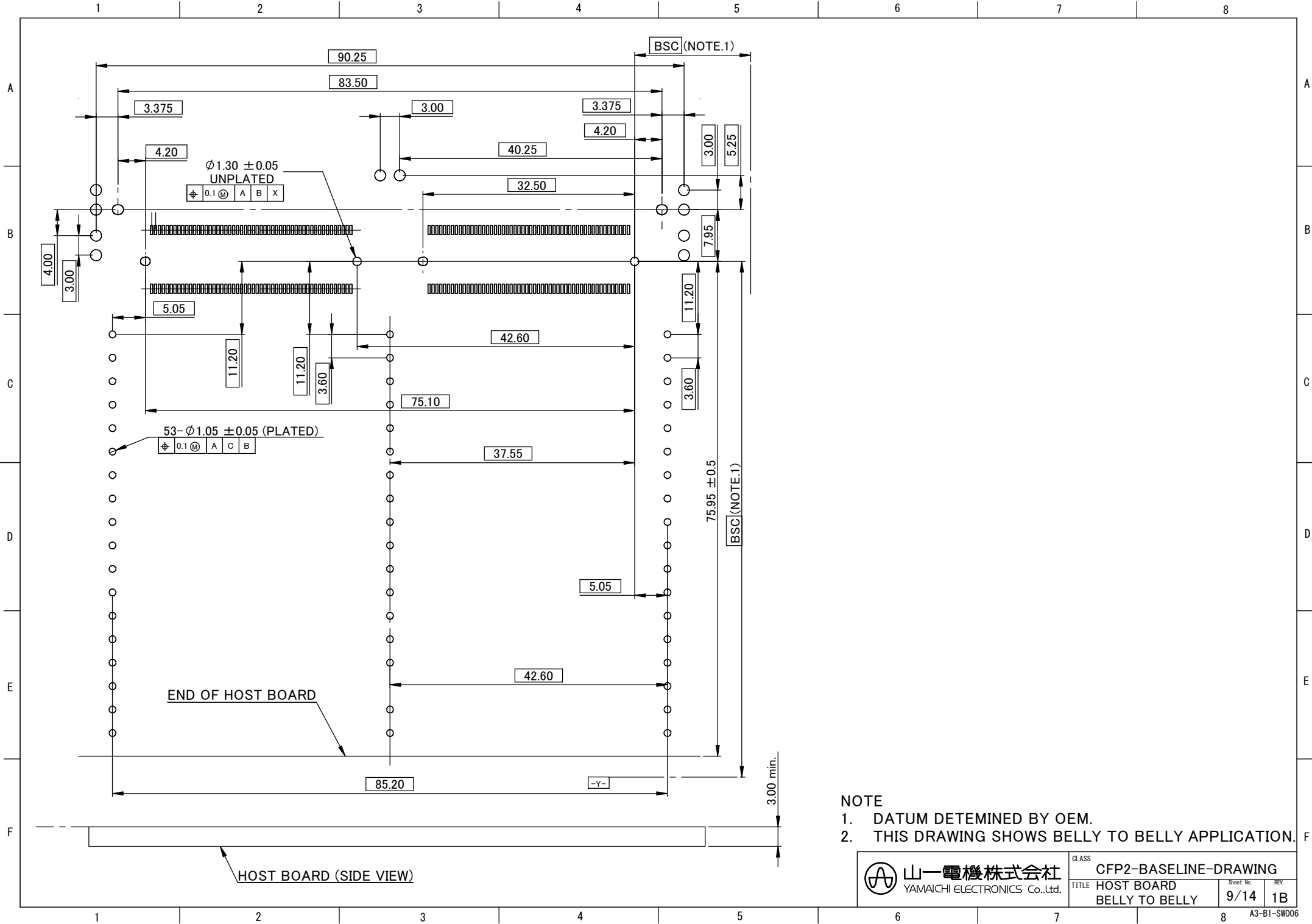


NOTE  
1. DATUM DETERMINED BY OEM.  
2. THIS DRAWING SHOWS SINGLE SIDE APPLICATION.


山一電機株式会社 YAMAICHI ELECTRONICS Co.,Ltd.	CLASS	CFP2-BASELINE-DRAWING	
	TITLE	HOST BOARD SINGLE SIDE	Sheet No. 8/14 REV. 1B

A3-B1-SW006





- NOTE
1. DATUM DETERMINED BY OEM.
  2. THIS DRAWING SHOWS BELLY TO BELLY APPLICATION.

 山一電機株式会社 YAMAICHI ELECTRONICS Co.,Ltd.	CLASS CFP2-BASELINE-DRAWING	
	TITLE HOST BOARD	
	Sheet No. 9/14	REV. 1B

A3-B1-SW006

1 2 3 4 5 6 7 8

A

B

C

D

E

F

A

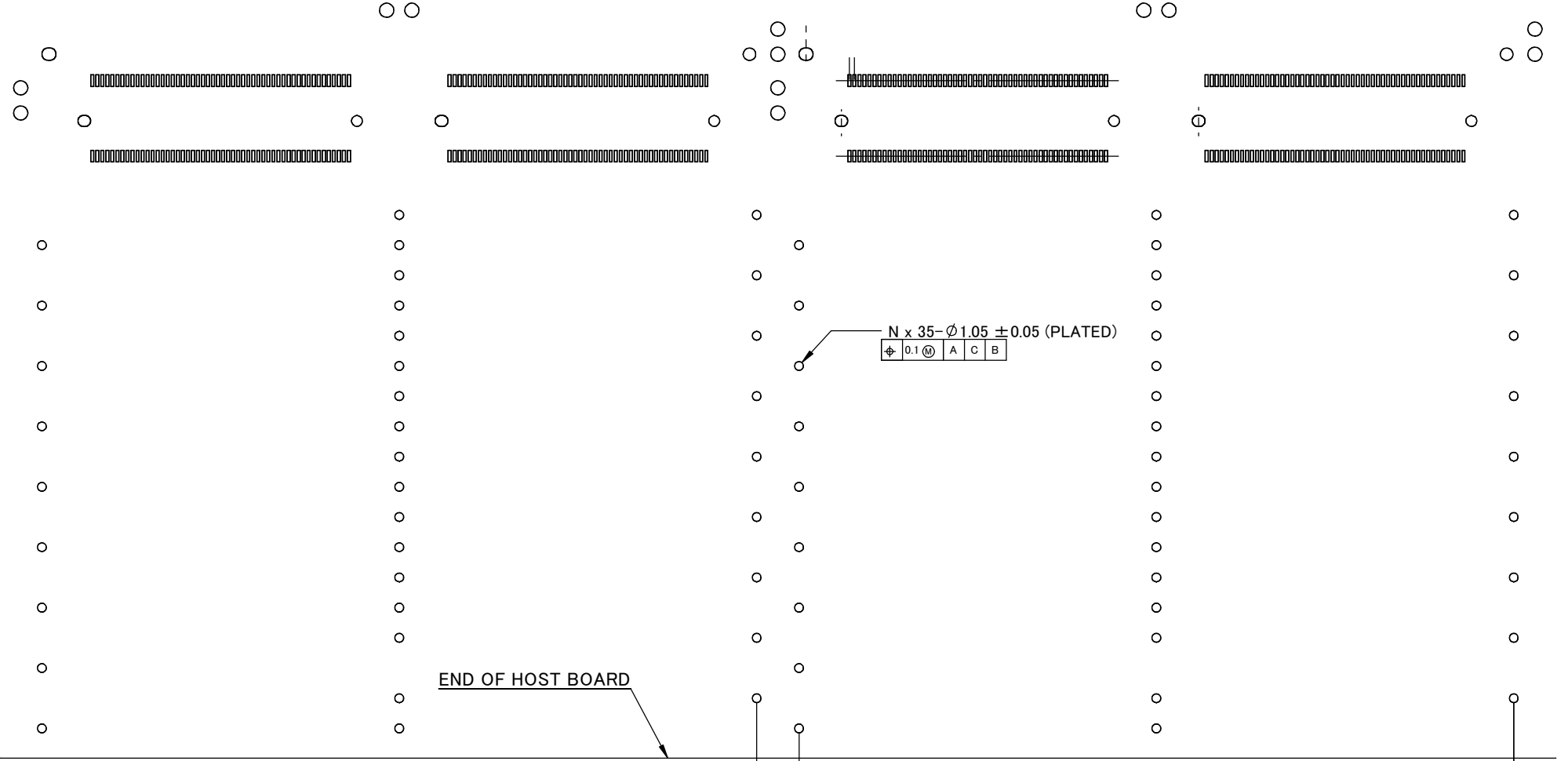
B

C

D


E

F



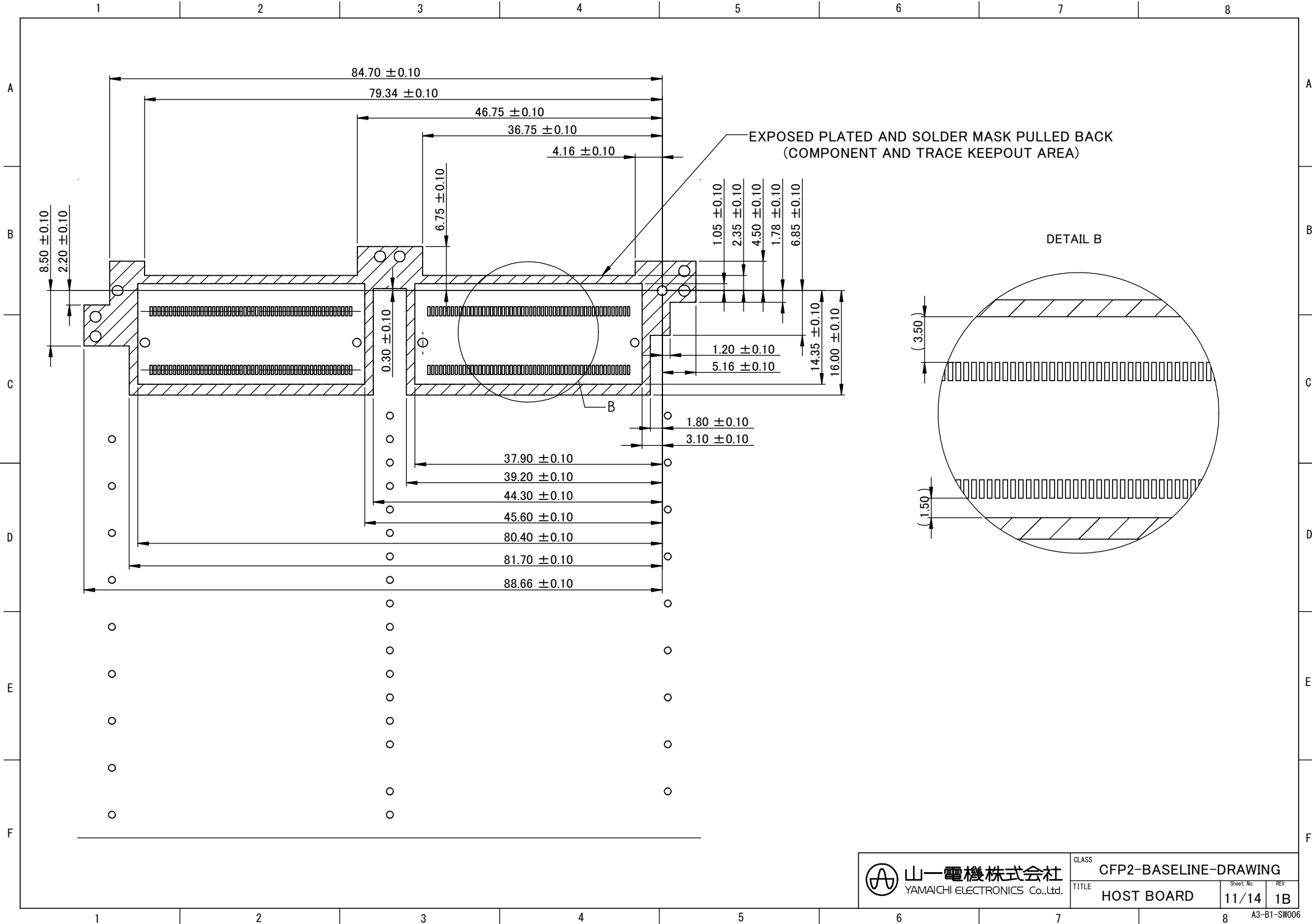
85.20  
90.25 (GANGED PITCH)

NOTE  
1. THIS DRAWING SHOWS SIDE BY SIDE APPLICATION.

 山一電機株式会社 YAMAICHI ELECTRONICS Co.,Ltd.	CLASS	CFP2-BASELINE-DRAWING	
	TITLE	HOST BOARD	Sheet No.
	SIDE BY SIDE	10/14	REV. 1B

A3-B1-SW006

1 2 3 4 5 6 7 8



1 2 3 4 5 6 7 8

PANEL THICKNESS: 1.0 - 3.0

PANEL OPENING IS LOCATED FROM HOST BOARD [-A-] HOLE

0.10

-A-

4-R0.50 max.

SECTION PANEL AND HOST BOARD

0.125 ±0.1

(14.175)

HOST BOARD

HOST BOARD [-A-] HOLE

14.30 ±0.10  
φ 0.15 (M) A B

37.55

86.35 ±0.10  
φ 0.15 (M) A B

(357.10)

4-14.30 ±0.1  
φ 0.15 A B

3-90.25

D

4-86.35 ±0.1  
φ 0.15 (M) A B

(3.90)

E

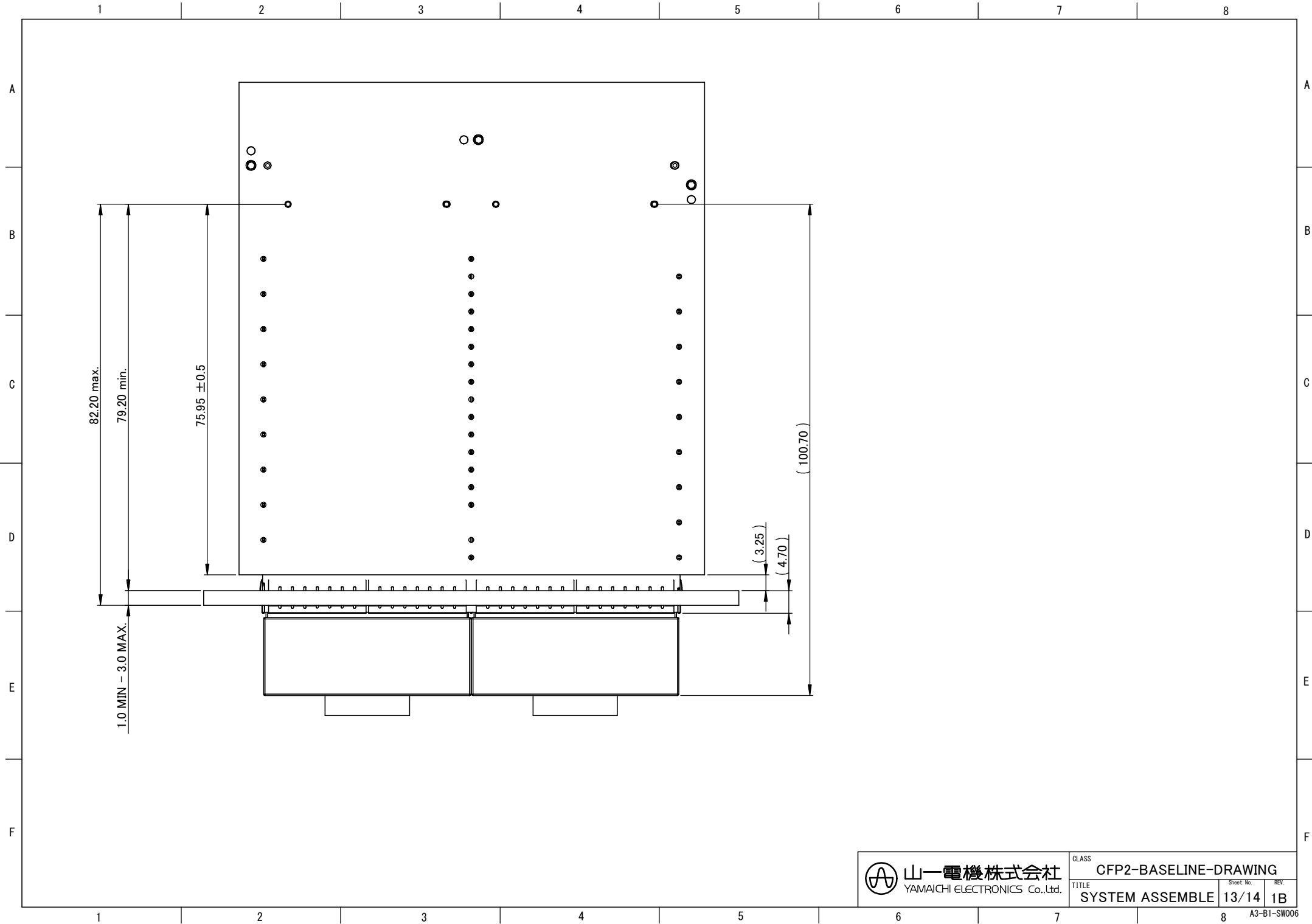
F



山一電機株式会社  
YAMAICHI ELECTRONICS Co.,Ltd.

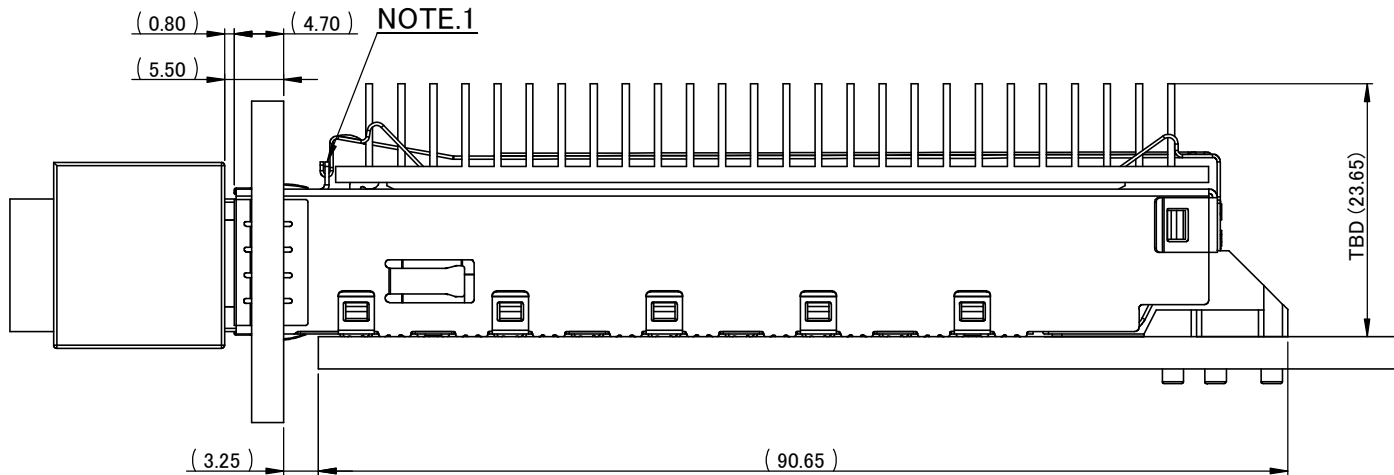
CLASS	CFP2-BASELINE-DRAWING		
TITLE	SYSTEM PANEL	Sheet No.	REV.
		12/14	1B

1 2 3 4 5 6 7 8 A3-B1-SW006

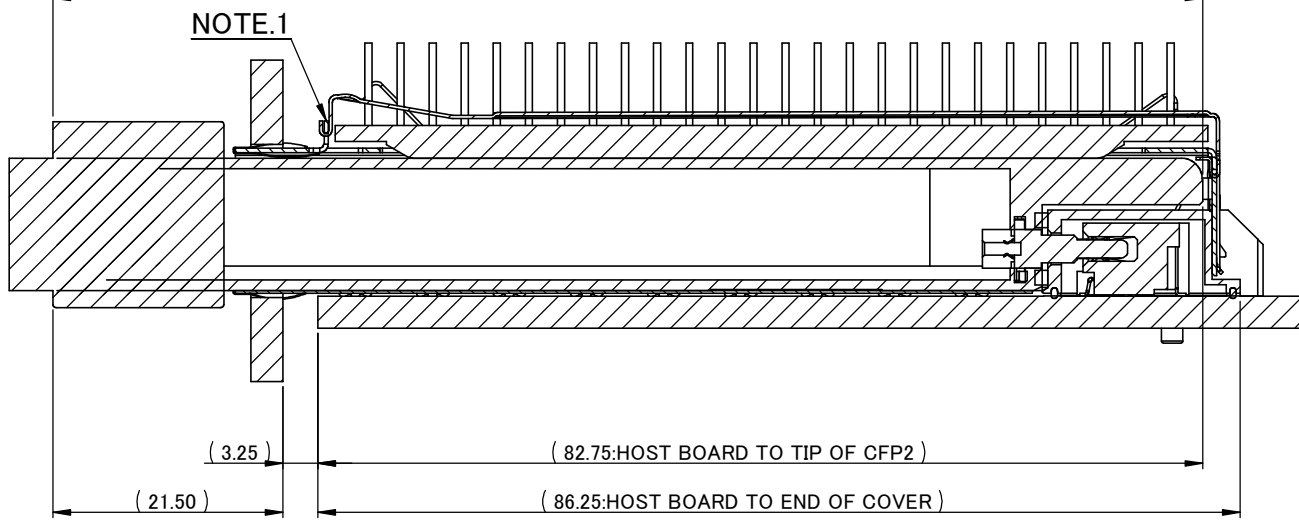



 山一電機株式会社  
 YAMAICHI ELECTRONICS Co.,Ltd.


CLASS	CFP2-BASELINE-DRAWING		
TITLE	SYSTEM ASSEMBLE	Sheet No.	REV.
		13/14	1B



SECTION OF CENTER  
107.50 (LENGTH OF MODULE)



**NOTE**  
1. CAGE LOCK IS OPTIONAL. WITHOUT THE CAGE LOCK, A DIFFERENT HEATSINK DESIGN IS REQUIRED AS THE ONE SHOWN WILL NOT WORK.

 山一電機株式会社 YAMAICHI ELECTRONICS Co.,Ltd.	CLASS	CFP2-BASELINE-DRAWING	
	TITLE	SYSTEM ASSEMBLE	Sheet No. 14/14 REV. 1B

A3-B1-SW006