



Short-Form Catalog

2014/2015

Light is OSRAM

OSRAM
Opto Semiconductors

LED for General Lighting

Product Selector	13
<hr/>	
DURIS Family	15
DURIS E	15
DURIS E 3	15
DURIS E 5	20
DURIS P	37
DURIS P 5 white.....	37
DURIS P 5 color	38
DURIS S	40
DURIS S 5	40
DURIS S 8	48
<hr/>	
OSLON Family	52
OSLON SSL 80	52
OSLON SSL 80 white	52
OSLON SSL 80 color	63
OSLON SSL 150	66
OSLON SSL 150 white	66
OSLON SSL 150 color	80
OSLON Square	83
<hr/>	
SOLERIQ Family	93
SOLERIQ E	93
SOLERIQ E 30	93
SOLERIQ E 45	95
SOLERIQ P	97
SOLERIQ P 6	97
SOLERIQ P 9	100
SOLERIQ P 13	102
SOLERIQ S	105
SOLERIQ S 13	105
SOLERIQ S 19	109
<hr/>	
Golden DRAGON Plus	115
Golden DRAGON Plus white	115
Golden DRAGON Plus color	119



General Lighting Applications

	DURIS E	DURIS P	DURIS P 5 color	DURIS S	OSLON SSL	OSLON Square	SOLERIQ P	SOLERIQ S
Retrofit								
Omnidirectional	✓	✓		✓	✓	✓		✓
Directional				✓	✓	✓	✓	✓
Linear	✓	✓		✓				
Home								
Pendant lighting			✓	✓	✓	✓		✓
Strip lights	✓			✓		✓	✓	
Spotlight				✓	✓		✓	✓
Shop								
Shop spot lighting				✓	✓	✓	✓	✓
Shop downlights	✓			✓	✓	✓	✓	✓
Shop linear lighting	✓	✓	✓	✓	✓			
Freezer/display	✓	✓		✓	✓	✓		
Shelf lighting	✓	✓	✓	✓	✓	✓	✓	✓
Office								
Office downlights	✓			✓	✓	✓		✓
Office linear/area lights	✓	✓		✓	✓	✓		
Architainment/Hospitality								
Accent/mood lighting	✓	✓	✓	✓	✓	✓	✓	✓
Cove lighting	✓	✓	✓	✓	✓	✓		✓
Strip lights	✓	✓	✓	✓				
Stage lighting					✓	✓	✓	✓
Wall washer		✓	✓		✓	✓	✓	✓
Page	15	37	38	40	52	83	97	105

✓ = recommendation

	DURIS E	DURIS P	DURIS P 5 color	DURIS S	OSLON SSL	OSLON Square	SOLERIQ P	SOLERIQ S
Industrial								
Portable lighting				✓	✓	✓	✓	✓
Emergency lighting		✓		✓	✓	✓	✓	
High/low bay				✓	✓	✓	✓	✓
Linear lighting	✓	✓	✓	✓	✓			
Outdoor								
Street		✓			✓	✓	✓	
Tunnel		✓			✓	✓	✓	
Parking		✓			✓	✓	✓	
Path lighting		✓			✓	✓	✓	
Effect/landscape lighting		✓	✓		✓	✓	✓	
Horticultural		✓	✓		✓	✓		
Page	15	37	38	40	52	83	97	105

✓ = recommendation

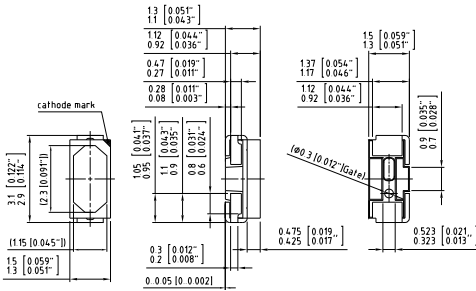
DURIS E

DURIS E 3



The DURIS[®] E 3 combines high efficacy and a wide beam angle into a compact format (3.0 mm x 1.4 mm). This is key to homogeneous illumination applications where the DURIS[®] E 3 never fails to impress with its performance on system level.

Package Outline



CS 8062-AA 125-A1 -04

Packing unit

8 mm tape with 2000 pcs. on Ø 180 mm reel

Technical Data	LCW JNSH.EC	LCW JNSH.EC	LCW JNSH.EC
Emission color	○ neutral white	○ warm and neutral white	○ warm white
CRI	min. 80 (typ. 85)		
Min. Luminous Flux/Intensity	2.4 cd	2.4 cd	2.24 cd
Viewing angle at 50 % I _v 2φ (typ.)	110 °		
Package	white SMT package, colored diffused silicone resin		
Ordering Codes			
LCW JNSH.EC-BTCP-5H7I-1	Q65111A4631 (5000K)		
LCW JNSH.EC-BTCP-5L7N-1	Q65111A4630 (4000K)		
LCW JNSH.EC-BTCP-5O8Q-1		Q65111A5856 (3500K)	
LCW JNSH.EC-BSBU-5R8T-1			Q65111A3545 (3000K)
LCW JNSH.EC-BRBT-5U8X-1			Q65111A3548 (2700K)

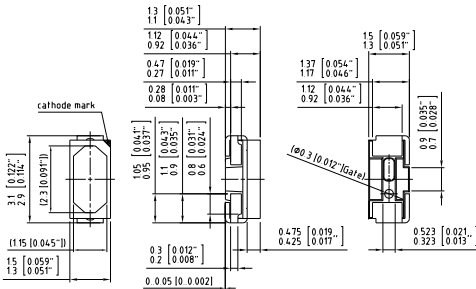
DURIS E

DURIS E 3



The DURIS® E 3 combines high efficacy and a wide beam angle into a compact format (3.0 mm x 1.4 mm). This is key to homogeneous illumination applications where the DURIS® E 3 never fails to impress with its performance on system level.

Package Outline



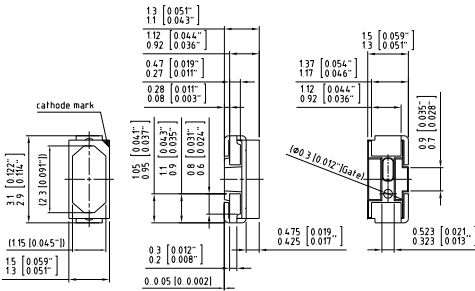
DURIS E

DURIS E 3



The DURIS® E 3 combines high efficacy and a wide beam angle into a compact format (3.0 mm x 1.4 mm). This is key to homogeneous illumination applications where the DURIS® E 3 never fails to impress with its performance on system level.

Package Outline



Packing unit

8 mm tape with 2000 pcs. on Ø 180 mm reel

CS3062-AA125-AA1 -04

Technical Data	LCW JNSH.PC	LCW JNSH.PC
Emission color	○ neutral white	○ warm white
CRI		min. 70
Min. Luminous Flux/Intensity	2.59 cd	2.4 cd
Viewing angle at 50 % I _v 2φ (typ.)		110 °
Package	white SMT package, colored diffused silicone resin	
Ordering Codes		
LCW JNSH.PC-BUCQ-5H7I-1	Q65111A2068 (5000K)	
LCW JNSH.PC-BUCQ-5L7N-1	Q65111A2554 (3000K)	
LCW JNSH.PC-BTCP-5R8T-1		Q65111A2555 (3000K)

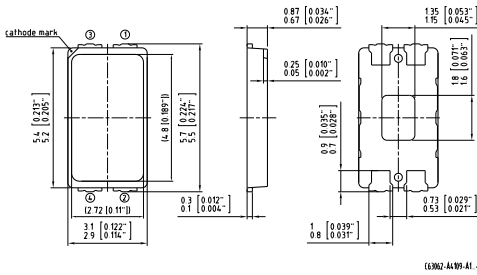
DURIS E

DURIS E 5



The DURIS[®] E 5 combines high efficacy and a wide beam angle into a compact format (5.6 mm x 3.0 mm). This is key to homogeneous illumination applications where the DURIS[®] E 5 never fails to impress with its performance on system level.

Package Outline



Packing unit

12 mm tape with 2000 pcs. on Ø 180 mm reel

Technical Data	LUW JDSH.EC
Emission color	○ cool white
CRI	min. 80 (typ. 85)
Min. Luminous Flux/Intensity	15 cd
Viewing angle at 50 % I _v 2φ (typ.)	120 °
Package	white SMT package, colored diffused silicone resin
Ordering Codes	
LUW JDSH.EC-FTGP-5C8E-L1N2	Q65111A4818 (6500K)
LUW JDSH.EC-FTGP-5E8G-L1N2	Q65111A4817 (5700K)

Technical Data	LCW JDSH.EC	LCW JDSH.EC	LCW JDSH.EC
Emission color	○ neutral white	○ warm and neutral white	○ warm white
CRI	min. 80 (typ. 85)		
Min. Luminous Flux/Intensity	15 cd	15 cd	14 cd
Viewing angle at 50 % I _v 2φ (typ.)	120 °		
Package	white SMT package, colored diffused silicone resin		
Ordering Codes			
LCW JDSH.EC-FTGP-5H7I-L1N2	Q65111A4785 (5000K)		
LCW JDSH.EC-FTGP-5L7N-L1N2	Q65111A4784 (4000K)		
LCW JDSH.EC-FTGP-5O8Q-L1N2		Q65111A5767 (3500K)	
LCW JDSH.EC-FSFU-5R8T-L1N2			Q65111A3299 (3000K)
LCW JDSH.EC-FSFU-5U8X-L1N2			Q65111A4786 (2700K)

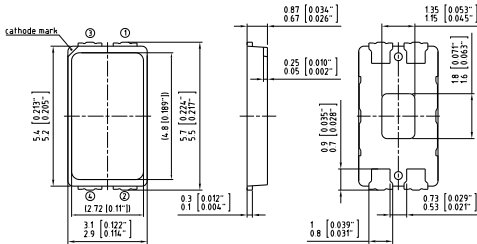
DURIS E

DURIS E 5



The DURIS® E 5 combines high efficacy and a wide beam angle into a compact format (5.6 mm x 3.0 mm). This is key to homogeneous illumination applications where the DURIS® E 5 never fails to impress with its performance on system level.

Package Outline



Packing unit

12 mm tape with 2000 pcs. on Ø 180 mm reel

63002-44-W9-A1-46

Technical Data	GW JDSMS1.EC	GW JDSMS1.EC	GW JDSMS1.EC
Emission color	○ cool white	○ neutral white	○ warm white
CRI	min. 80 (typ. 85)		
Min. Luminous Flux/Intensity	14 cd		
Viewing angle at 50 % I _v 2φ (typ.)	120 °		
Package	white SMT package, colored diffused silicone resin		
Ordering Codes			
GW JDSMS1.EC-FSFU-5C8E-L1N2	Q65111A5218 (6500K)		
GW JDSMS1.EC-FSFU-5E8G-L1N2	Q65111A5498 (5700K)		
GW JDSMS1.EC-FSFU-5H7I-L1N2		Q65111A5217 (5000K)	
GW JDSMS1.EC-FSFU-5L7N-L1N2		Q65111A5216 (4000K)	
GW JDSMS1.EC-FSFU-5O8Q-L1N2			Q65111A5751 (3500K)
GW JDSMS1.EC-FRFT-5R8T-L1N2			Q65111A5065 (3000K)
GW JDSMS1.EC-FRFT-5U8X-L1N2			Q65111A5752 (2700K)

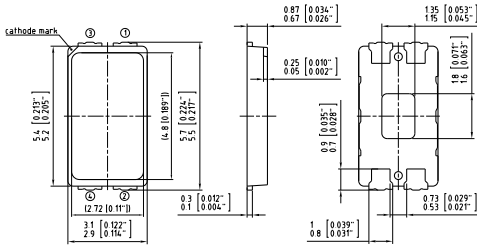
DURIS E

DURIS E 5



The DURIS® E 5 combines high efficacy and a wide beam angle into a compact format (5.6 mm x 3.0 mm). This is key to homogeneous illumination applications where the DURIS® E 5 never fails to impress with its performance on system level.

Package Outline



Packing unit

12 mm tape with 2000 pcs. on Ø 180 mm reel

63002-44-W9-A1-46

Technical Data	GW JDSMS1.PC	GW JDSMS1.PC	GW JDSMS1.PC
Emission color	○ cool white	○ neutral white	○ warm white
CRI	min. 70		
Min. Luminous Flux/Intensity	15 cd	15 cd	14 cd
Viewing angle at 50 % I _v 2φ (typ.)	120 °		
Package	white SMT package, colored diffused silicone resin		
Ordering Codes			
GW JDSMS1.PC-FTGP-5C8E-L1N2	Q65111A5428 (6500K)		
GW JDSMS1.PC-FTGP-5E8G-L1N2	Q65111A5452 (5700K)		
GW JDSMS1.PC-FTGP-5H7I-L1N2		Q65111A5427 (5000K)	
GW JDSMS1.PC-FTGP-5L7N-L1N2		Q65111A5431 (4000K)	
GW JDSMS1.PC-FSFU-5R8T-L1N2			Q65111A5429 (3000K)

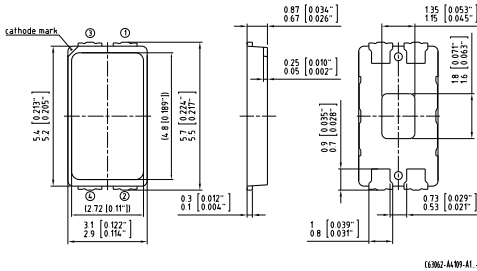
DURIS E

DURIS E 5



The DURIS® E 5 combines high efficacy and a wide beam angle into a compact format (5.6 mm x 3.0 mm). This is key to homogeneous illumination applications where the DURIS® E 5 never fails to impress with its performance on system level.

Package Outline



Packing unit

12 mm tape with 1000 pcs. on Ø 180 mm reel

(630)2-44-99-A1-46

Technical Data	GW JDSMS1.CC	GW JDSMS1.CC
Emission color	○ neutral white	○ warm white
CRI		min. 90 (typ. 95)
Min. Luminous Flux/Intensity	12.1 cd	11.2 cd
Viewing angle at 50 % I _v 2φ (typ.)		120 °
Package	white SMT package, colored diffused silicone resin	
Ordering Codes		
GW JDSMS1.CC-FQFS-5L7N-L1N2	Q65111A6274 (4000K)	
GW JDSMS1.CC-PPFR-5O8Q-L1N2		Q65111A6276 (3500K)
GW JDSMS1.CC-PPFR-5R8T-L1N2		Q65111A6275 (3000K)
GW JDSMS1.CC-EUFQ-5U8X-L1N2		Q65111A6277 (2700K)

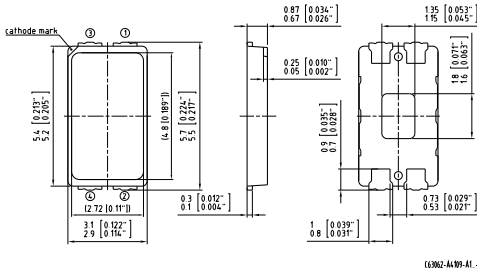
DURIS E

DURIS E 5



The DURIS® E 5 combines high efficacy and a wide beam angle into a compact format (5.6 mm x 3.0 mm). This is key to homogeneous illumination applications where the DURIS® E 5 never fails to impress with its performance on system level.

Package Outline



Packing unit

12 mm tape with 2000 pcs. on Ø 180 mm reel

Technical Data	LUW JDSI.EC
Emission color	○ cool white
CRI	min. 80 (typ. 85)
Min. Luminous Flux/Intensity	14 cd
Viewing angle at 50 % I _v 2φ (typ.)	120 °
Package	white SMT package, colored diffused silicone resin
Ordering Codes	
LUW JDSI.EC-FSFU-5C8E-L1N2	Q65111A3519 (6500K)
LUW JDSI.EC-FSFU-5E8G-L1N2	Q65111A3529 (5700K)

Technical Data	LCW JDSI.EC	LCW JDSI.EC
Emission color	○ neutral white	○ warm white
CRI	min. 80 (typ. 85)	
Min. Luminous Flux/Intensity	14 cd	13 cd
Viewing angle at 50 % I _v 2φ (typ.)	120 °	
Package	white SMT package, colored diffused silicone resin	
Ordering Codes		
LCW JDSI.EC-FSFU-5H7I-L1N2	Q65111A3524 (5000K)	
LCW JDSI.EC-FSFU-5L7N-L1N2	Q65111A3526 (4000K)	
LCW JDSI.EC-FRFT-5O8Q-L1N2	Q65111A3527 (3500K)	
LCW JDSI.EC-FRFT-5R8T-L1N2	Q65111A3528 (3000K)	
LCW JDSI.EC-FRFT-5U8X-L1N2	Q65111A4822 (2700K)	

Technical Data	LCW JDSI.PC	LCW JDSI.PC
Emission color	○ neutral white	○ warm white
CRI		min. 70
Min. Luminous Flux/Intensity	15 cd	14 cd
Viewing angle at 50 % I _v 2φ (typ.)		120 °
Package	white SMT package, colored diffused silicone resin	
Ordering Codes		
LCW JDSI.PC-FTGP-5H7I-L1N2	Q65111A3232 (5000K)	
LCW JDSI.PC-FTGP-5L7N-L1N2	Q65111A3221 (4000K)	
LCW JDSI.PC-FSFU-5R8T-L1N2	Q65111A3219 (3000K)	

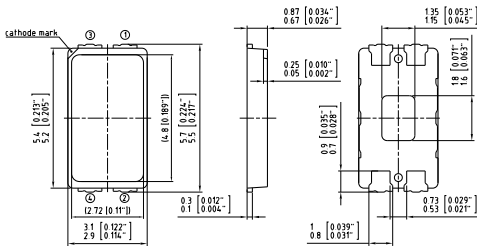
DURIS E

DURIS E 5



The DURIS® E 5 combines high efficacy and a wide beam angle into a compact format (5.6 mm x 3.0 mm). This is key to homogeneous illumination applications where the DURIS® E 5 never fails to impress with its performance on system level.

Package Outline



Packing unit

12 mm tape with 2000 pcs. on Ø 180 mm reel

63002-44-W9-A1-46

Technical Data	GW JDSLS1.EC	GW JDSLS1.EC	GW JDSLS1.EC
Emission color	○ cool white	○ neutral white	○ warm white
CRI	min. 80 (typ. 85)		
Min. Luminous Flux/Intensity	13 cd		
Viewing angle at 50 % I _v 2φ (typ.)	120 °		
Package	white SMT package, colored diffused silicone resin		
Ordering Codes			
GW JDSLS1.EC-FRFT-5C8E-1	Q65111A5204 (6500K)		
GW JDSLS1.EC-FRFT-5E8G-1	Q65111A4674 (5700K)		
GW JDSLS1.EC-FRFT-5H7I-1		Q65111A4673 (5000K)	
GW JDSLS1.EC-FRFT-5L7N-1		Q65111A4672 (4000K)	
GW JDSLS1.EC-FRFT-5O8Q-1			Q65111A4671 (3500K)
GW JDSLS1.EC-FRFT-5R8T-1			Q65111A4670 (3000K)
GW JDSLS1.EC-FQFS-5U8X-1			Q65111A4820 (2700K)

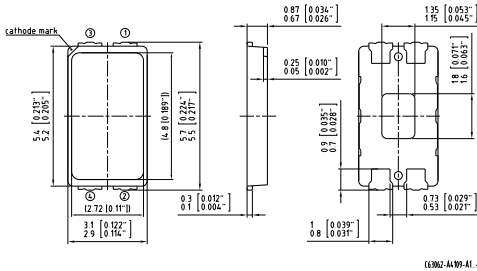
DURIS E

DURIS E 5



The DURIS® E 5 combines high efficacy and a wide beam angle into a compact format (5.6 mm x 3.0 mm). This is key to homogeneous illumination applications where the DURIS® E 5 never fails to impress with its performance on system level.

Package Outline



Packing unit

12 mm tape with 1000 pcs. on Ø 180 mm reel

Technical Data	GW JDSRS1.CC	GW JDSRS1.CC
Emission color	○ warm white	○ neutral white
CRI	min. 90 (typ. 95)	
Min. Luminous Flux/Intensity	11.2 cd	13 cd
Viewing angle at 50 % I _v 2φ (typ.)	120 °	
Package	white SMT package, colored diffused silicone resin	
Ordering Codes		
GW JDSRS1.CC-PPFR-5U8X-L1N2	Q65111A6496 (2700K)	
GW JDSRS1.CC-FQFS-5O8Q-L1N2	Q65111A6495 (3500K)	
GW JDSRS1.CC-FQFS-5R8T-L1N2	Q65111A6494 (3000K)	
GW JDSRS1.CC-FRFT-5L7N-L1N2	Q65111A6506 (4000K)	

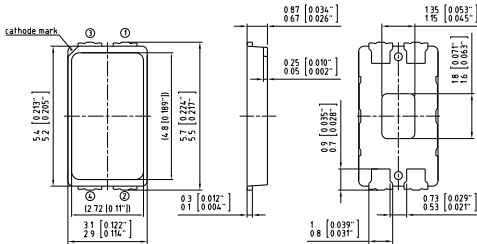
DURIS E

DURIS E 5



The DURIS® E 5 combines high efficacy and a wide beam angle into a compact format (5.6 mm x 3.0 mm). This is key to homogeneous illumination applications where the DURIS® E 5 never fails to impress with its performance on system level.

Package Outline



Packing unit

12 mm tape with 2000 pcs. on Ø 180 mm reel

63002-44-W9-A1-46

Technical Data	GW JDSRS1.EC
Emission color	○ white
CRI	min. 80 (typ. 85)
Min. Luminous Flux/Intensity	14 cd
Viewing angle at 50 % I_v 2φ (typ.)	120 °
Package	white SMT package, colored diffused silicone resin
Ordering Codes	
GW JDSRS1.EC-FSFU-5U8X-L1N2	Q65111A6481 (2700K)
GW JDSRS1.EC-FTGP-5C8E-L1N2	Q65111A6491 (6500K)
GW JDSRS1.EC-FTGP-5E8G-L1N2	Q65111A6490 (5800K)
GW JDSRS1.EC-FTGP-5H7I-L1N2	Q65111A6503 (5000K)
GW JDSRS1.EC-FTGP-5L7N-L1N2	Q65111A6502 (4000K)
GW JDSRS1.EC-FTGP-5O8Q-L1N2	Q65111A6501 (3500K)
GW JDSRS1.EC-FTGP-5R8T-L1N2	Q65111A6489 (3000K)
GW JDSRS1.EC-FTGP-5U8X-L1N2	Q65111A6480 (2700K)

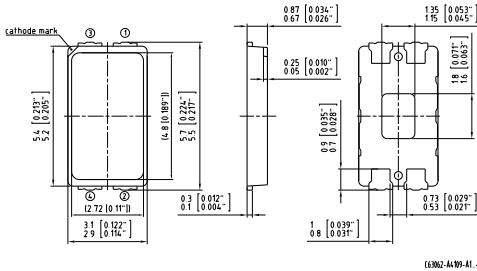
DURIS E

DURIS E 5



The DURIS® E 5 combines high efficacy and a wide beam angle into a compact format (5.6 mm x 3.0 mm). This is key to homogeneous illumination applications where the DURIS® E 5 never fails to impress with its performance on system level.

Package Outline



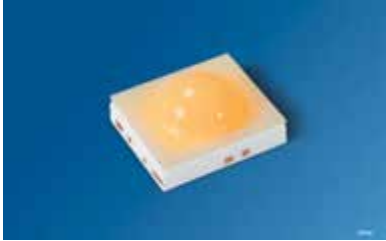
Packing unit

12 mm tape with 1000 pcs. on Ø 180 mm reel

Technical Data	GW JDSRS1.PC
Emission color	○ white
CRI	min. 70
Min. Luminous Flux/Intensity	16.4 cd
Viewing angle at 50 % I _v 2φ (typ.)	120 °
Package	white SMT package, colored diffused silicone resin
Ordering Codes	
GW JDSRS1.PC-FUGQ-5C8E-L1N2	Q65111A6485 (6500K)
GW JDSRS1.PC-FUGQ-5E8G-L1N2	Q65111A6484 (5800K)
GW JDSRS1.PC-FUGQ-5H7I-L1N2	Q65111A6483 (5000K)
GW JDSRS1.PC-FUGQ-5L7N-L1N2	Q65111A6497 (4000K)

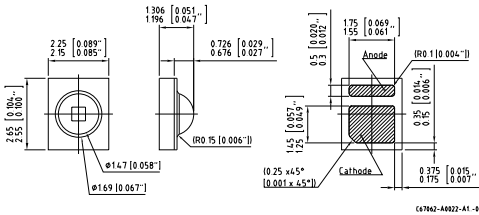
DURIS P

DURIS P 5 white



High-efficacy mid-power LED with long lifetimes also at high currents and high junction temperatures.

Package Outline



Packing unit

12 mm tape with 600 pcs. on ϕ 180 mm reel

Technical Data	GW DASPA1.EC	GW DASPA1.EC
Emission color	○ neutral white	○ warm white
CRI		min. 80 (typ. 83)
Min. Luminous Flux/Intensity	30.4 lm	28 lm
Viewing angle at 50 % I _v 2 ϕ (typ.)		130 °
Package		SMT package
Ordering Codes		
GW DASPA1.EC-HQHS-5H7I-1	Q65111A2353 (5000K)	
GW DASPA1.EC-HPHR-5H7I-1	Q65111A2352 (5000K)	
GW DASPA1.EC-HPHR-5L7N-1	Q65111A2351 (4000K)	
GW DASPA1.EC-GUHQ-5L7N-1	Q65111A2324 (4000K)	
GW DASPA1.EC-HPHR-5R8T-1		Q65111A2350 (3000K)
GW DASPA1.EC-GUHQ-5R8T-1		Q65111A2349 (3000K)

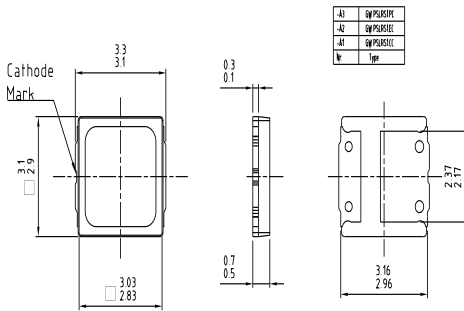
Technical Data	GY DASPA1.23	GR DASPA1.23
Emission color	● 590 nm	● 625 nm
Intensity	PhiV [mlm] = 12100 ... 15000	PhiV [mlm] = 13000 ... 16400
Viewing angle at 50 % I _v 2φ (typ.)	120 °	
Package	SMT package	
Ordering Codes		
GY DASPA1.23-FQFS-36-1	Q65111A4493	
GY DASPA1.23-FPFR-36-1	Q65111A4492	
GY DASPA1.23-ETFP-36-1	Q65111A4404	
GR DASPA1.23-FRFT-26-1		Q65111A4399
GR DASPA1.23-FQFS-26-1		Q65111A4400
GR DASPA1.23-FUGQ-23-1		Q65111A4407
GR DASPA1.23-FQFS-46-1		Q65111A4755

DURIS S

DURIS S 5



Package Outline



C67062-A0130-A1_01

Packing unit

12 mm tape with 3000 pcs. on Ø 180 mm reel

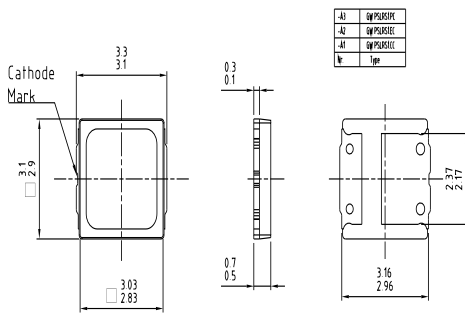
Technical Data	GW PSLPS1.EC
Emission color	○ white
CRI	min. 80 (typ. 82)
Min. Luminous Flux/Intensity	97 lm
Viewing angle at 50 % I _v 2φ (typ.)	120 °
Package	white SMT package, colored diffused silicone resin
Ordering Codes	
GW PSLPS1.EC-KTLP-5C7E-1	Q65111A4911 (6500K)
GW PSLPS1.EC-KTLP-5H7I-1	Q65111A4526 (5000K)
GW PSLPS1.EC-KSKU-5R8T-1	Q65111A4913 (3000K)
GW PSLPS1.EC-KSKU-5U8X-1	Q65111A4912 (2700K)
GW PSLPS1.EC-KTLP-5L7N-1	Q65111A4943 (4000K)
GW PSLPS1.EC-KTLQ-5R8T-1	Q65111A5294 (3000K)

DURIS S

DURIS S 5



Package Outline



C67062-A0130-A1.01

Packing unit

12 mm tape with 3000 pcs. on Ø 180 mm reel

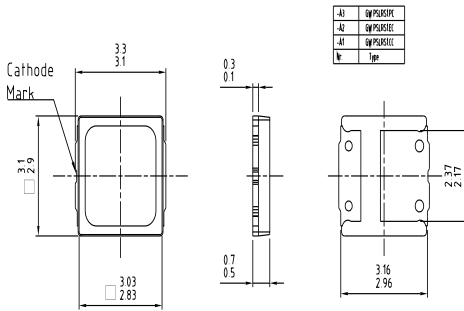
Technical Data	GW PSLMS1.EC
Emission color	○ white
CRI	min. 80 (typ. 82)
Min. Luminous Flux/Intensity	21 lm
Viewing angle at 50 % I _v 2φ (typ.)	120 °
Package	white SMT package, colored diffused silicone resin
Ordering Codes	
GW PSLMS1.EC-GRGT-5R8T-1	Q65111A4522 (3000K)
GW PSLMS1.EC-GRGT-5U8X-1	Q65111A4523 (2700K)
GW PSLMS1.EC-GSGU-5L7N-1	Q65111A4520 (4000K)
GW PSLMS1.EC-GSGU-5R8T-1	Q65111A4919 (3000K)
GW PSLMS1.EC-GSGU-5U8X-1	Q65111A4918 (2700K)
GW PSLMS1.EC-GTHP-5C7E-1	Q65111A4917 (6500K)
GW PSLMS1.EC-GTHP-5F7G-1	Q65111A4517 (5700K)
GW PSLMS1.EC-GTHP-5H7I-1	Q65111A4518 (5000K)
GW PSLMS1.EC-GTHP-5L7N-1	Q65111A4915 (4000K)

DURIS S

DURIS S 5



Package Outline



C67062-A0130-A1.01

Packing unit
12 mm tape with 3000 pcs. on Ø 180 mm reel

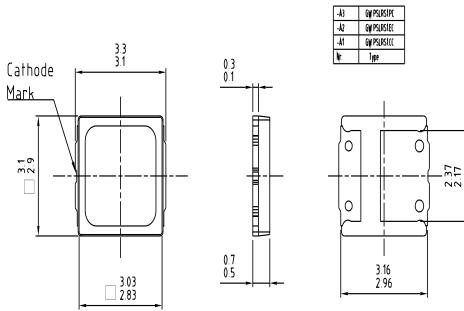
Technical Data	GW PSLLS1.EC
Emission color	○ white
CRI	min. 80 (typ. 82)
Min. Luminous Flux/Intensity	28 lm
Viewing angle at 50 % I _v 2φ (typ.)	120 °
Package	white SMT package, colored diffused silicone resin
Ordering Codes	
GW PSLLS1.EC-HPHR-5C7E-1	Q65111A4924 (6500K)
GW PSLLS1.EC-HPHR-5F7G-1	Q65111A4923 (5700K)
GW PSLLS1.EC-HPHR-5H7I-1	Q65111A4534 (5000K)
GW PSLLS1.EC-HPHR-5L7N-1	Q65111A4921 (4000K)
GW PSLLS1.EC-GUHQ-5L7N-1	Q65111A4536 (4000K)
GW PSLLS1.EC-GUHQ-5R8T-1	Q65111A4926 (3000K)
GW PSLLS1.EC-GTHP-5U8X-1	Q65111A4539 (2700K)

DURIS S

DURIS S 5



Package Outline



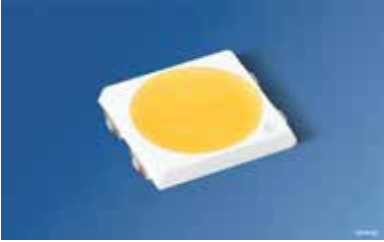
C67062-A0130-A1.01

Packing unit
12 mm tape with 3000 pcs. on Ø 180 mm reel

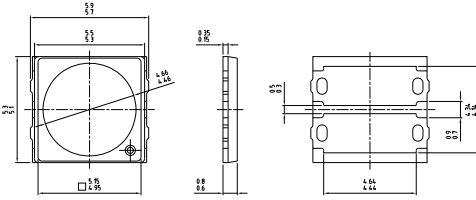
Technical Data	GW PSLRS1.EC
Emission color	○ white
CRI	min. 80 (typ. 82)
Min. Luminous Flux/Intensity	104.2 lm
Viewing angle at 50 % I _v 2φ (typ.)	120 °
Package	white SMT package, colored diffused silicone resin
Ordering Codes	
GW PSLRS1.EC-KULQ-5U8X-1	Q65111A6662 (2700K)
GW PSLRS1.EC-LPLR-5U8X-1	Q65111A6663 (2700K)
GW PSLRS1.EC-LPLR-5R8T-1	Q65111A6677 (3000K)
GW PSLRS1.EC-LQLS-5R8T-1	Q65111A6678 (3000K)
GW PSLRS1.EC-LPLR-5O8Q-1	Q65111A6675 (3500K)
GW PSLRS1.EC-LQLS-5O8Q-1	Q65111A6671 (3500K)
GW PSLRS1.EC-LPLR-5L7N-1	Q65111A6674 (4000K)
GW PSLRS1.EC-LQLS-5L7N-1	Q65111A6670 (4000K)
GW PSLRS1.EC-LPLR-5J7K-1	Q65111A6665 (4500K)
GW PSLRS1.EC-LQLS-5J7K-1	Q65111A6666 (4500K)
GW PSLRS1.EC-LQLS-5H7I-1	Q65111A6672 (5000K)
GW PSLRS1.EC-LRLT-5H7I-1	Q65111A6669 (5000K)
GW PSLRS1.EC-LQLS-5F7G-1	Q65111A6664 (5700K)
GW PSLRS1.EC-LRLT-5F7G-1	Q65111A6673 (5700K)
GW PSLRS1.EC-LQLS-5C7E-1	Q65111A6667 (6500K)
GW PSLRS1.EC-LRLT-5C7E-1	Q65111A6668 (6500K)

DURIS S

DURIS S 8



Package Outline



C63062-A4206-A1-03

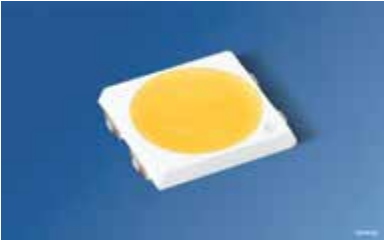
Packing unit

12 mm tape with 500 pcs. on Ø 180 mm reel

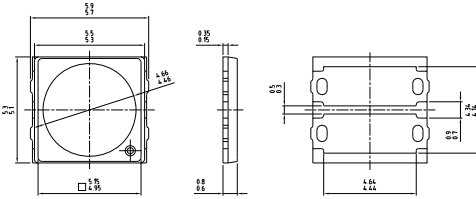
Technical Data	GW P9LRS1.EM	GW P9LRS1.EM
Emission color	white	
CRI	min. 80 (typ. 82)	
Min. Luminous Flux/Intensity	450 lm	
Viewing angle at 50 % I _v 2φ (typ.)	120 °	
Package	white SMT package, colored dif-fused silicone resin	
Ordering Codes		
GW P9LRS1.EM-PPPR-27S5	Q65111A4935 (2700K)	
GW P9LRS1.EM-PPPS-30S3	Q65111A4932 (3000K)	
GW P9LRS1.EM-PQPS-40S5	Q65111A4928 (4000K)	
GW P9LRS1.EM-PQPS-50S5	Q65111A5412 (5000K)	
GW P9LRS1.EM-PQPS-57S5	Q65111A5410 (5700K)	
GW P9LRS1.EM-PQPS-65S5	Q65111A5497 (6500K)	
GW P9LRS1.EM-PQPS-30S5		Q65111A4931 (3000K)

DURIS S

DURIS S 8



Package Outline



Packing unit

12 mm tape with 1500 pcs. on Ø 180 mm reel
reel

C63062-A4206-A1-03

Technical Data	GW P9LMS1.EM
Emission color	○ white
CRI	min. 80 (typ. 82)
Min. Luminous Flux/Intensity	330 lm
Viewing angle at 50 % I _v 2φ (typ.)	120 °
Package	white SMT package, colored diffused silicone resin
Ordering Codes	
GW P9LMS1.EM-NRNT-27S5	Q65111A4840 (2700K)
GW P9LMS1.EM-NRNU-30S3	Q65111A4839 (3000K)
GW P9LMS1.EM-NSPP-40S3	Q65111A4837 (4000)
GW P9LMS1.EM-NSPP-40S5	Q65111A4836 (4000K)
GW P9LMS1.EM-NSNU-30S5	Q65111A5250 (3000K)
GW P9LMS1.EM-NSNU-50S5	Q65111A5291 (5000K)
GW P9LMS1.EM-NSNU-65S5	Q65111A5414 (6500K)
GW P9LMS1.EM-NSNU-57S5	Q65111A5416 (5700K)

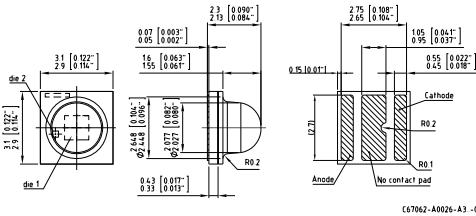
OSLON SSL 80

OSLON SSL 80 white



Highest flux. Highest efficacy. This OSLON SSL family next generation LED offers a prefocused radiation pattern making it the ideal choice for spot lighting applications. Its low thermal resistance allows this device to be highly efficient even at high driving currents. Applications demanding long lifetimes are perfectly addressed with this highly reliable LED.

Package Outline



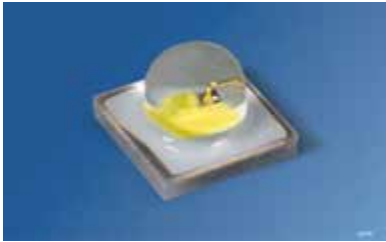
Packing unit

12 mm tape with 600 pcs. on Ø 180 mm reel

Technical Data	LCW CR7P.EC	LCW CR7P.EC
Emission color	○ neutral white	○ warm white
CRI		min. 80 (typ. 83)
Min. Luminous Flux/Intensity	112 lm	104.2 lm
Viewing angle at 50 % I _v 2φ (typ.)		80 °
Package	SMT ceramic package with silicone resin and silicone lens	
Ordering Codes		
LCW CR7P.EC-LPLR-5H7I-1	Q65111A2594 (5000K)	
LCW CR7P.EC-LPLR-5J7K-1	Q65111A2705 (4500K)	
LCW CR7P.EC-LPLR-5L7N-1	Q65111A3116 (4000K)	
LCW CR7P.EC-KULQ-5O8Q-1		Q65111A2795 (3500K)
LCW CR7P.EC-KULQ-5R8T-1		Q65111A2533 (3000K)
LCW CR7P.EC-KTLP-5U8X-1		Q65111A2534 (2700K)

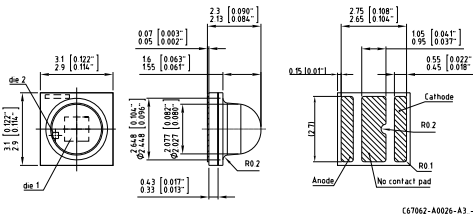
OSLO SSL 80

OSLO SSL 80 white



Highest flux. Highest efficacy. This OSLO SSL family next generation LED offers a prefocused radiation pattern making it the ideal choice for spot lighting applications. Its low thermal resistance allows this device to be highly efficient even at high driving currents. Applications demanding long lifetimes are perfectly addressed with this highly reliable LED.

Package Outline



Packing unit

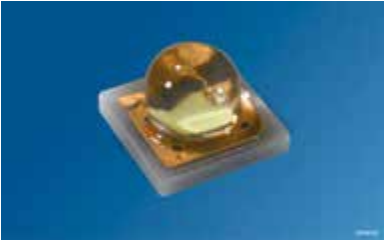
12 mm tape with 600 pcs. on Ø 180 mm reel

C67062-A0026-A3 -02

Technical Data	LUW CR7P (streetwhite)
Emission color	○ streetwhite
CRI	typ. 70
Min. Luminous Flux/Intensity	140 lm
Viewing angle at 50 % I _v 2φ (typ.)	80 °
Package	SMT ceramic package with silicone resin and silicone lens
Ordering Codes	
LUW CR7P-LSLU-HPHR-1	Q65111A3825 (6500K)
LUW CR7P-LRLT-HPHR-1	Q65111A4269 (6500K)
LUW CR7P-LRLT-HPJR-1	Q65111A2506 (6000K)
LUW CR7P-LRLT-JPJR-1	Q65111A2912 (5500K)
LUW CR7P-LRLT-GPGR-1	Q65111A4826 (7500K)

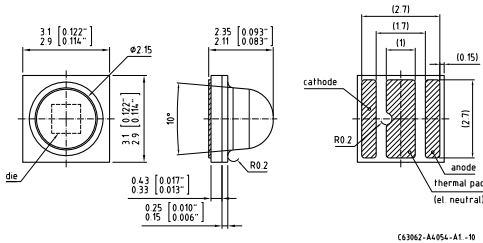
OSLO SSL 80

OSLO SSL 80 white



This ultra-compact 1 W class LED offers a pre-focused radiation pattern making it the ideal choice for spot lighting applications. Its low thermal resistance allows this device to be highly efficient even at high driving currents. Applications demanding long lifetimes are perfectly addressed with this highly reliable LED.

Package Outline



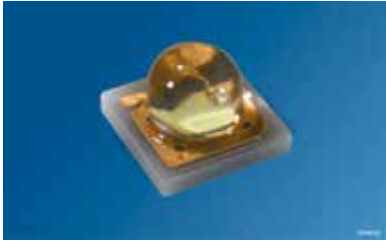
Packing unit

12 mm tape with 600 pcs. on Ø 180 mm reel

Technical Data	LCW CQ7P.CC	LCW CQ7P.CC	LCW CQ7P.CC
Emission color	○ warm and neutral white	○ neutral white	○ warm white
CRI	typ. 95		
Min. Luminous Flux/Intensity	82 lm	76.3 lm	82 lm
Viewing angle at 50 % I _v 2φ (typ.)	80 °		
Package	SMT ceramic package with silicone resin and silicone lens		
Ordering Codes			
LCW CQ7P.CC-KRKT-5L7N-1-K	Q65111A2283 (4000K)		
LCW CQ7P.CC-KQKS-5L7N-1		Q65111A1889 (4000K)	
LCW CQ7P.CC-KPKR-5L7N-1		Q65111A1866 (4000K)	
LCW CQ7P.CC-KRKT-5O8Q-1			Q65111A4151 (3500K)
LCW CQ7P.CC-KQKS-5O8Q-1			Q65111A1891 (3500K)
LCW CQ7P.CC-KPKR-5O8Q-1			Q65111A1890 (3500K)
LCW CQ7P.CC-KQKS-5R8T-1			Q65111A3456 (3000K)
LCW CQ7P.CC-KPKR-5R8T-1			Q65111A1893 (3000K)
LCW CQ7P.CC-JUKQ-5R8T-1			Q65111A1892 (3000K)
LCW CQ7P.CC-KPKR-5U8X-1			Q65111A3448 (2700K)
LCW CQ7P.CC-JUKQ-5U8X-1			Q65111A1898 (2700K)
LCW CQ7P.CC-JTKP-5U8X-1			Q65111A1897 (2700K)

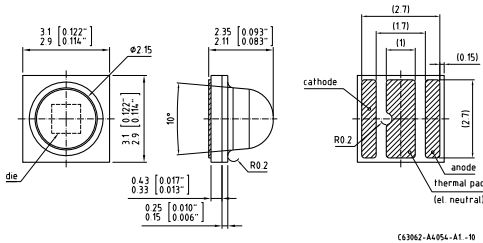
OSLO SSL 80

OSLO SSL 80 white



This ultra-compact 1 W class LED offers a pre-focused radiation pattern making it the ideal choice for spot lighting applications. Its low thermal resistance allows this device to be highly efficient even at high driving currents. Applications demanding long lifetimes are perfectly addressed with this highly reliable LED.

Package Outline



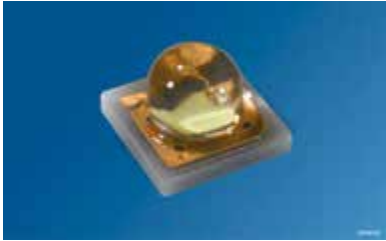
Packing unit

12 mm tape with 600 pcs. on Ø 180 mm reel

Technical Data	LCW CQ7P.EC	LCW CQ7P.EC
Emission color	○ neutral white	○ warm white
CRI	min. 80 (typ. 82)	
Min. Luminous Flux/Intensity	97 lm	89.2 lm
Viewing angle at 50 % I _v 2φ (typ.)	80 °	
Package	SMT ceramic package with silicone resin and silicone lens	
Ordering Codes		
LCW CQ7P.EC-KTLP-5H7I-1-K	Q65111A1786 (5000K)	
LCW CQ7P.EC-KSKU-5H7I-1-K	Q65111A1782 (5000K)	
LCW CQ7P.EC-KTLP-5J7K-1-K	Q65111A1787 (4500K)	
LCW CQ7P.EC-KSKU-5J7K-1-K	Q65111A1783 (4500K)	
LCW CQ7P.EC-KTLP-5L7N-1-K	Q65111A3397 (4000K)	
LCW CQ7P.EC-KSKU-5L7N-1-K	Q65111A1784 (4000K)	
LCW CQ7P.EC-KRKT-5L7N-1-K	Q65111A1761 (4000K)	
LCW CQ7P.EC-KSKU-5O8Q-1-K	Q65111A1785 (3500K)	
LCW CQ7P.EC-KRKT-5O8Q-1-K	Q65111A1762 (3500K)	
LCW CQ7P.EC-KSKU-5R8T-1-K	Q65111A1530 (3000K)	
LCW CQ7P.EC-KRKT-5R8T-1-K	Q65111A1781 (3000K)	
LCW CQ7P.EC-KRKT-5U8X-1-K	Q65111A1480 (2700K)	
LCW CQ7P.EC-KQKS-5U8X-1-K	Q65111A1788 (2700K)	

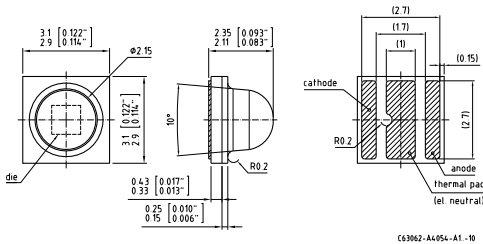
OSLO SSL 80

OSLO SSL 80 white



This ultra-compact 1 W class LED offers a pre-focused radiation pattern making it the ideal choice for spot lighting applications. Its low thermal resistance allows this device to be highly efficient even at high driving currents. Applications demanding long lifetimes are perfectly addressed with this highly reliable LED.

Package Outline



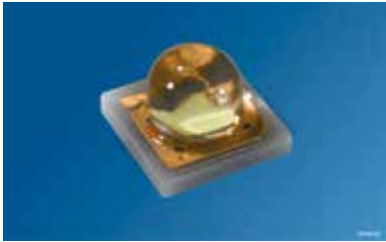
Packing unit

12 mm tape with 600 pcs. on ϕ 180 mm reel

Technical Data	LCW CQ7P.PC
Emission color	○ neutral white
CRI	typ. 70
Min. Luminous Flux/Intensity	112 lm
Viewing angle at 50 % I _v 2φ (typ.)	80 °
Package	SMT ceramic package with silicone resin and silicone lens
Ordering Codes	
LCW CQ7P.PC-LPLR-5J7K-1-K	Q65111A1627 (4500K)
LCW CQ7P.PC-KULQ-5J7K-1	Q65111A1462 (4500K)
LCW CQ7P.PC-KTLP-5J7K-1	Q65111A1482 (4500K)
LCW CQ7P.PC-LPLR-5H7-1-K	Q65111A1583 (5000K)
LCW CQ7P.PC-KULQ-5H7I-1	Q65111A1484 (5000K)
LCW CQ7P.PC-KTLP-5H7I-1	Q65111A1481 (5000K)
LCW CQ7P.PC-LPLR-5L7N-1-K	Q65111A2293 (4000K)
LCW CQ7P.PC-KULQ-5L7N-1	Q65111A1570 (4000K)
LCW CQ7P.PC-KTLP-5L7N-1	Q65111A1483 (4000K)

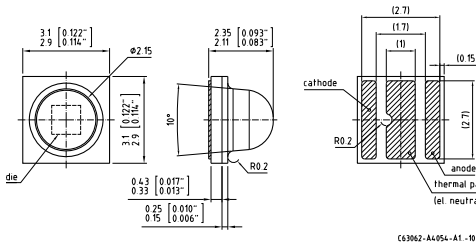
OSLO SSL 80

OSLO SSL 80 white



This ultra-compact 1 W class LED offers a pre-focused radiation pattern making it the ideal choice for spot lighting applications. Its low thermal resistance allows this device to be highly efficient even at high driving currents. Applications demanding long lifetimes are perfectly addressed with this highly reliable LED.

Package Outline



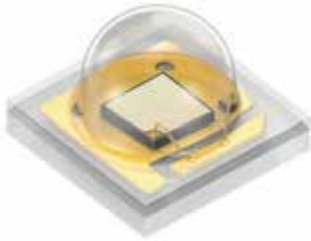
Packing unit

12 mm tape with 600 pcs. on Ø 180 mm reel

Technical Data	LUW CQ7P
Emission color	○ cool white
CRI	typ. 70
Min. Luminous Flux/Intensity	104.2 lm
Viewing angle at 50 % I _V 2φ (typ.)	80 °
Package	SMT ceramic package with silicone resin and silicone lens
Ordering Codes	
LUW CQ7P-KULQ-5C8E-1	Q65111A1496 (6500K)
LUW CQ7P-KULQ-5D8F-1	Q65111A1497 (6000K)
LUW CQ7P-KULQ-5E8G-1	Q65111A1464 (5700K)

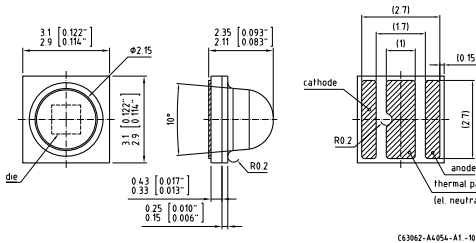
OSLON SSL 80

OSLON SSL 80 color



This ultra-compact 1 W class LED offers a pre-focused radiation pattern making it the ideal choice for spot lighting applications. Its low thermal resistance allows this device to be highly efficient even at high driving currents. Applications demanding long lifetimes are perfectly addressed with this highly reliable LED.

Package Outline



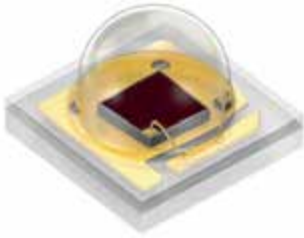
Packing unit

12 mm tape with 600 pcs. on Ø 180 mm reel

Technical Data	LD CQ7P	LB CP7P	LT CP7P
Emission color	● 455 nm	● 470 nm	● 528 nm
Intensity	PhiE [mW] = 500 ... 630	PhiV [mlm] = 21000 ... 39000	PhiV [mlm] = 97000 ... 130000
Viewing angle at 50 % I _V 2φ (typ.)	80 °		
Package	SMT ceramic package with silicone resin and silicone lens		
Ordering Codes			
LD CQ7P-2U3U-W5-1-K	Q65111A2269		
LB CP7P-GYHY-35	Q65111A1091		
LB CP7P-GZHX-35	Q65111A2135		
LT CP7P-KZLX-26	Q65111A4141		
LT CP7P-KYKZ-26	Q65111A2267		

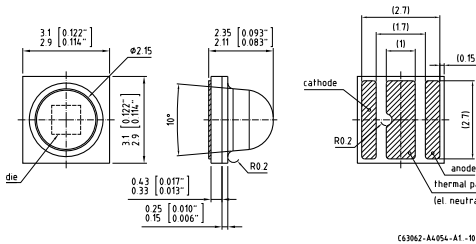
OSLO SSL 80

OSLO SSL 80 color



This ultra-compact 1 W class LED offers a pre-focused radiation pattern making it the ideal choice for spot lighting applications. Its low thermal resistance allows this device to be highly efficient even at high driving currents. Applications demanding long lifetimes are perfectly addressed with this highly reliable LED.



Package Outline



Packing unit

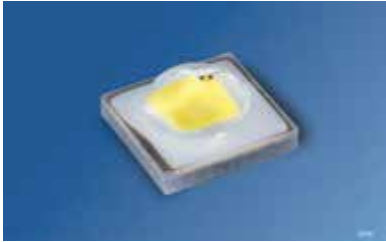
12 mm tape with 600 pcs. on Ø 180 mm reel

Technical Data	LY CP7P	LA CP7P
Emission color	● 590 nm	● 617 nm
Intensity	PhiV [mlm] = 52000 ... 65800	PhiV [mlm] = 76300 ... 97000
Viewing angle at 50 % I _V 2φ (typ.)		80 °
Package	SMT ceramic package with silicone resin and silicone lens	
Ordering Codes		
LY CP7P-JRJT-36	Q65111A2059	
LY CP7P-JQJS-36	Q65111A2057	
LA CP7P-KQKS-W3		Q65111A2282
LA CP7P-KPKR-W4		Q65111A2063
LA CP7P-JUQK-W4		Q65111A2062

Technical Data	LR CP7P	LH CP7P
Emission color	 623 nm	 640 nm
Intensity	PhiV [mlm] = 56300 ... 71000	PhiE [mW] = 315 ... 400
Viewing angle at 50 % I _v 2φ (typ.)	80 °	
Package	SMT ceramic package with silicone resin and silicone lens	
Ordering Codes		
LR CP7P-JSJU-1	Q65111A2597	
LR CP7P-JRJT-1	Q65111A2055	
LH CP7P-2T3T-1		Q65111A2061

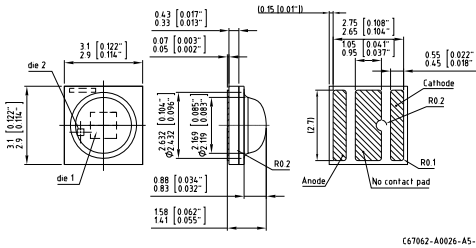
OSLO SSL 150

OSLO SSL 150 white



Highest flux. Highest efficacy. This OSLO SSL family next generation LED provides a wide radiation pattern allowing perfect interaction and various designs including color mixing LED clusters. Its low thermal resistance allows this device to be highly efficient even at high driving currents. Applications demanding long lifetimes are perfectly addressed with this highly reliable LED.

Package Outline



Packing unit

12 mm tape with 600 pcs. on Ø 180 mm reel

Technical Data	LCW CRDP.EC	LCW CRDP.EC
Emission color	○ neutral white	○ warm white
CRI	min. 80 (typ. 82)	
Min. Luminous Flux/Intensity	112 lm	104.2 lm
Viewing angle at 50 % I _v 2φ (typ.)	150 °	
Package	SMT ceramic package with silicone resin and silicone lens	
Ordering Codes		
LCW CRDP.EC-LPLR-5H7I-1	Q65111A2588 (5000K)	
LCW CRDP.EC-LPLR-5J7K-1	Q65111A2703 (4500K)	
LCW CRDP.EC-LPLR-5L7N-1	Q65111A3115 (4000K)	
LCW CRDP.EC-KULQ-5O8Q-1	Q65111A2723 (3500K)	
LCW CRDP.EC-KULQ-5R8T-1	Q65111A2531 (3000K)	
LCW CRDP.EC-KTLP-5U8X-1	Q65111A2532 (2700K)	

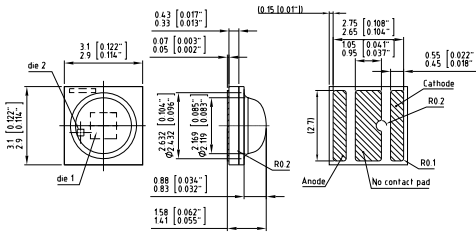
OSLO SSL 150

OSLO SSL 150 white



Highest flux. Highest efficacy. This OSLO SSL family next generation LED provides a wide radiation pattern allowing perfect interaction and various designs including color mixing LED clusters. Its low thermal resistance allows this device to be highly efficient even at high driving currents. Applications demanding long lifetimes are perfectly addressed with this highly reliable LED.

Package Outline



C67062-A0026-A5-02

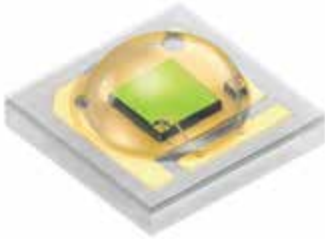
Packing unit

12 mm tape with 600 pcs. on Ø 180 mm reel

Technical Data	LCW CRDP.PC	LCW CRDP.PC
Emission color	○ cool white	○ neutral white
CRI	min. 70 (typ. 72)	
Min. Luminous Flux/Intensity	130 lm	
Viewing angle at 50 % I _v 2φ (typ.)	150 °	
Package	SMT ceramic package with silicone resin and silicone lens	
Ordering Codes		
LCW CRDP.PC-LRLT-5F7G-1	Q65111A3396 (5700K)	
LCW CRDP.PC-LQLS-5F7G-1	Q65111A4194 (5700K)	
LCW CRDP.PC-LRLT-5H7I-1	Q65111A2587 (5000K)	
LCW CRDP.PC-LRLT-5J7K-1	Q65111A4172 (4500K)	
LCW CRDP.PC-LQLS-5J7K-1	Q65111A2638 (4500K)	
LCW CRDP.PC-LRLT-5L7N-1	Q65111A4168 (4000K)	
LCW CRDP.PC-LQLS-5L7N-1	Q65111A2546 (4000K)	

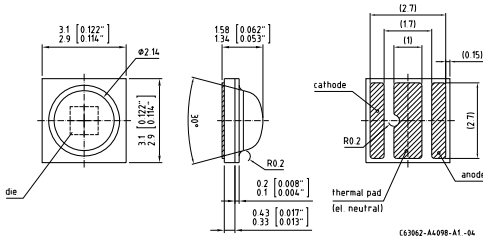
OSLO SSL 150

OSLO SSL 150 white



This ultra-compact 1 W class LED provides a wide radiation pattern allowing perfect interaction and various designs including color mixing LED clusters. Its low thermal resistance allows this device to be highly efficient even at high driving currents. Applications demanding long lifetimes are perfectly addressed with this highly reliable LED:

Package Outline



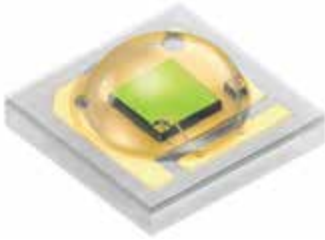
Packing unit

12 mm tape with 600 pcs. on Ø 180 mm reel

Technical Data	LCW CQDP.CC	LCW CQDP.CC
Emission color	<input type="radio"/> neutral white	<input type="radio"/> warm white
CRI		typ. 95
Min. Luminous Flux/Intensity		82 lm
Viewing angle at 50 % I _v 2φ (typ.)		150 °
Package	SMT ceramic package with silicone resin and silicone lens	
Ordering Codes		
LCW CQDP.CC-KRKT-5L7N-1-K	Q65111A2281 (4000K)	
LCW CQDP.CC-KQKS-5L7N-1	Q65111A1908 (4000K)	
LCW CQDP.CC-KPKR-5L7N-1	Q65111A1907 (4000K)	
LCW CQDP.CC-KRKT-5O8Q-1		Q65111A4152 (3500K)
LCW CQDP.CC-KQKS-5O8Q-1		Q65111A1911 (3500K)
LCW CQDP.CC-KPKR-5O8Q-1		Q65111A1910 (3500K)
LCW CQDP.CC-KQKS-5R8T-1		Q65111A3449 (3000K)
LCW CQDP.CC-KPKR-5R8T-1		Q65111A1913 (3000K)
LCW CQDP.CC-JUKQ-5R8T-1		Q65111A1912 (3000K)
LCW CQDP.CC-KPKR-5U8X-1-K		Q65111A3451 (2700K)
LCW CQDP.CC-JUKQ-5U8X-1		Q65111A1915 (2700K)
LCW CQDP.CC-JTKP-5U8X-1		Q65111A1914 (2700K)

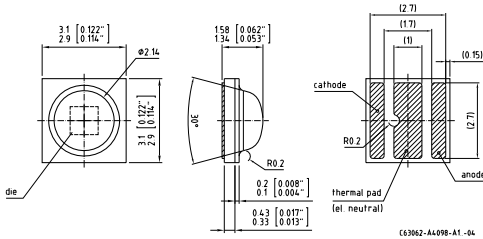
OSLO SSL 150

OSLO SSL 150 white



This ultra-compact 1 W class LED provides a wide radiation pattern allowing perfect interaction and various designs including color mixing LED clusters. Its low thermal resistance allows this device to be highly efficient even at high driving currents. Applications demanding long lifetimes are perfectly addressed with this highly reliable LED:

Package Outline



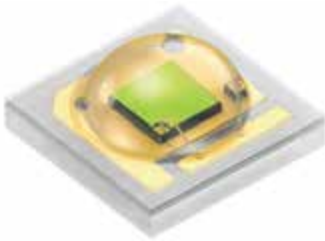
Packing unit

12 mm tape with 600 pcs. on Ø 180 mm reel

Technical Data	LCW CQDP.EC	LCW CQDP.EC
Emission color	○ neutral white	○ warm white
CRI	min. 80 (typ. 82)	
Min. Luminous Flux/Intensity	97 lm	89.2 lm
Viewing angle at 50 % I _v 2φ (typ.)	150 °	
Package	SMT ceramic package with silicone resin and silicone lens	
Ordering Codes		
LCW CQDP.EC-KTLP-5H7I-1-K	Q65111A1513 (5000K)	
LCW CQDP.EC-KSKU-5H7I-1-K	Q65111A1508 (5000K)	
LCW CQDP.EC-KTLP-5J7K-1-K	Q65111A1514 (4500K)	
LCW CQDP.EC-KSKU-5J7K-1-K	Q65111A1509 (4500K)	
LCW CQDP.EC-KTLP-5L7N-1-K	Q65111A3398 (4000K)	
LCW CQDP.EC-KSKU-5L7N-1-K	Q65111A1510 (4000K)	
LCW CQDP.EC-KRKT-5L7N-1-K	Q65111A1504 (4000K)	
LCW CQDP.EC-KSKU-5O8Q-1-K		Q65111A1511 (3500K)
LCW CQDP.EC-KRKT-5O8Q-1-K		Q65111A1505 (3500K)
LCW CQDP.EC-KSKU-5R8T-1-K		Q65111A1512 (3000K)
LCW CQDP.EC-KRKT-5R8T-1-K		Q65111A1506 (3000K)
LCW CQDP.EC-KRKT-5U8X-1-K		Q65111A1507 (2700K)
LCW CQDP.EC-KQKS-5U8X-1-K		Q65111A1503 (2700K)

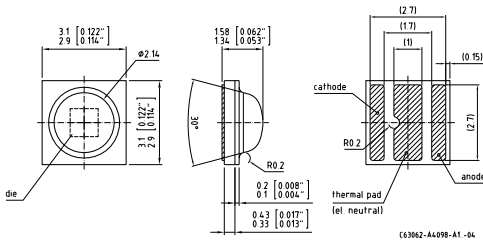
OSLO SSL 150

OSLO SSL 150 white



This ultra-compact 1 W class LED provides a wide radiation pattern allowing perfect interaction and various designs including color mixing LED clusters. Its low thermal resistance allows this device to be highly efficient even at high driving currents. Applications demanding long lifetimes are perfectly addressed with this highly reliable LED:

Package Outline



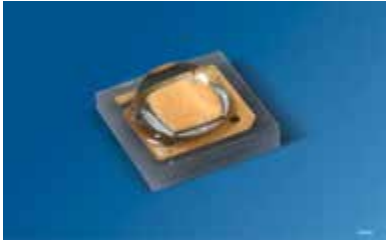
Packing unit

12 mm tape with 600 pcs. on $\phi 180$ mm reel

Technical Data	LCW CQDP.PC
Emission color	○ neutral white
CRI	typ. 70
Min. Luminous Flux/Intensity	112 lm
Viewing angle at 50 % I _v 2φ (typ.)	150 °
Package	SMT ceramic package with silicone resin and silicone lens
Ordering Codes	
LCW CQDP.PC-LPLR-5H7I-1-K	Q65111A1467 (5000K)
LCW CQDP.PC-KULQ-5H7I-1	Q65111A1502 (5000K)
LCW CQDP.PC-KTLP-5H7I-1	Q65111A1499 (5000K)
LCW CQDP.PC-LPLR-5J7K-1-K	Q65111A1447 (4500K)
LCW CQDP.PC-KULQ-5J7K-1	Q65111A1445 (4500K)
LCW CQDP.PC-KTLP-5J7K-1	Q65111A1500 (4500K)
LCW CQDP.PC-LPLR-5L7N-1-K	Q65111A2270 (4000K)
LCW CQDP.PC-KTLP-5L7N-1	Q65111A1501 (4000K)
LCW CQDP.PC-KSKU-5L7N-1	Q65111A1791 (4000K)

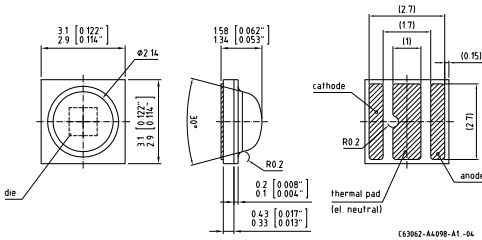
OSLO SSL 150

OSLO SSL 150 white



This ultra-compact 1 W class LED provides a wide radiation pattern allowing perfect interaction and various designs including color mixing LED clusters. Its low thermal resistance allows this device to be highly efficient even at high driving currents. Applications demanding long lifetimes are perfectly addressed with this highly reliable LED:

Package Outline



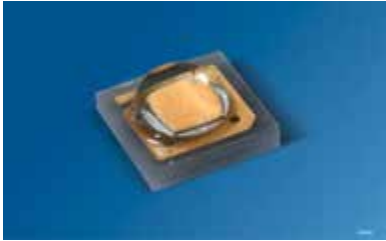
Packing unit

12 mm tape with 600 pcs. on Ø 180 mm reel

Technical Data	LUW CQDP
Emission color	○ cool white
CRI	typ. 70
Min. Luminous Flux/Intensity	121 lm
Viewing angle at 50 % I _v 2φ (typ.)	150 °
Package	SMT ceramic package with silicone resin and silicone lens
Ordering Codes	
LUW CQDP-LQLR-5C8E-1-K	Q65111A1950 (6500K)
LUW CQDP-LPLR-5C8E-1	Q65111A1487 (6500K)
LUW CQDP-KULQ-5C8E-1	Q65111A1493 (6500K)
LUW CQDP-LQLS-5D8F-1-K	Q65111A1642 (6000K)
LUW CQDP-LPLR-5D8F-1	Q65111A1486 (6000K)
LUW CQDP-KULQ-5D8F-1	Q65111A1492 (6000K)
LUW CQDP-LQLS-5E8G-1	Q65111A3459 (5700K)
LUW CQDP-LPLR-5E8G-1	Q65111A1485 (5800K)
LUW CQDP-KULQ-5E8G-1	Q65111A1491 (5800K)

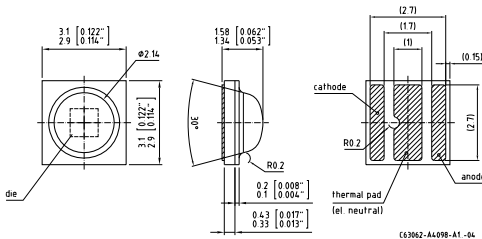
OSLO SSL 150

OSLO SSL 150 white



This ultra-compact 1 W class LED provides a wide radiation pattern allowing perfect interaction and various designs including color mixing LED clusters. Its low thermal resistance allows this device to be highly efficient even at high driving currents. Applications demanding long lifetimes are perfectly addressed with this highly reliable LED:

Package Outline



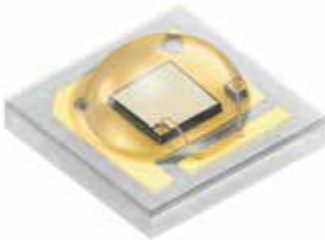
Packing unit

12 mm tape with 600 pcs. on Ø 180 mm reel

Technical Data	LUW CQDP (EQW)
Emission color	○ EQ white
CRI	typ. 65
Min. Luminous Flux/Intensity	130 lm
Viewing angle at 50 % I _v 2φ (typ.)	150 °
Package	SMT ceramic package with silicone resin and silicone lens
Ordering Codes	
LUW CQDP-LRLT-MJMW-1	Q65111A1905
LUW CQDP-LQLS-MJMW-1	Q65111A1904
LUW CQDP-LQLS-M8MI-1	Q65111A1901
LUW CQDP-LPLR-M8MI-1	Q65111A1900

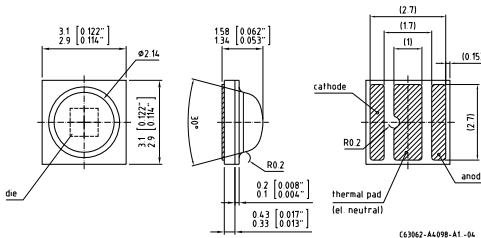
OSLON SSL 150

OSLON SSL 150 color



This ultra-compact 1 W class LED provides a wide radiation pattern allowing perfect interaction and various designs including color mixing LED clusters. Its low thermal resistance allows this device to be highly efficient even at high driving currents. Applications demanding long lifetimes are perfectly addressed with this highly reliable LED.

Package Outline



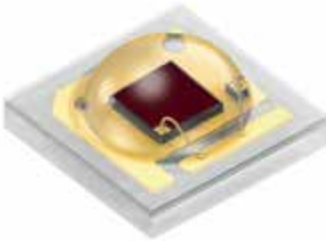
Packing unit

12 mm tape with 600 pcs. on ϕ 180 mm reel

Technical Data	LD CQDP	LB CPDP	LT CPDP
Emission color	● 455 nm	● 470 nm	● 528 nm
Intensity	PhiE [mW] = 500 ... 630	PhiV [mlm] = 24000 ... 33000	PhiV [mlm] = 97000 ... 130000
Viewing angle at 50 % I _V 2 ϕ (typ.)	150 °		
Package	SMT ceramic package with silicone resin and silicone lens		
Ordering Codes			
LD CQDP-2U3U-W5-1-K	Q65111A2268		
LB CPDP-GZXH-35	Q65111A2136		
LB CPDP-GYHY-35	Q65111A0403		
LT CPDP-KZLX-26	Q65111A4142		
LT CPDP-KYKZ-26	Q65111A2266		

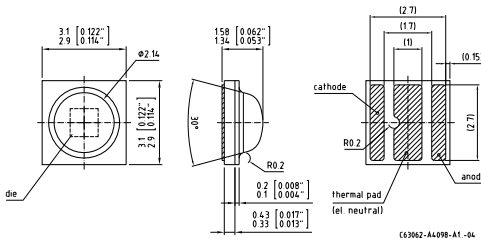
OSLO SSL 150

OSLO SSL 150 color



This ultra-compact 1 W class LED provides a wide radiation pattern allowing perfect interaction and various designs including color mixing LED clusters. Its low thermal resistance allows this device to be highly efficient even at high driving currents. Applications demanding long lifetimes are perfectly addressed with this highly reliable LED.

Package Outline



Packing unit

12 mm tape with 600 pcs. on Ø 180 mm reel

Technical Data	LY CPDP	LA CPDP
Emission color	● 590 nm	● 617 nm
Intensity	PhiV [mlm] = 52000 ... 65800	PhiV [mlm] = 76300 ... 97000
Viewing angle at 50 % I _v 2φ (typ.)		150 °
Package	SMT ceramic package with silicone resin and silicone lens	
Ordering Codes		
LY CPDP-JRJT-36	Q65111A2060	
LY CPDP-JQJS-36	Q65111A2058	
LA CPDP-KQKS-W3		Q65111A2284
LA CPDP-KPKR-W3		Q65111A1856

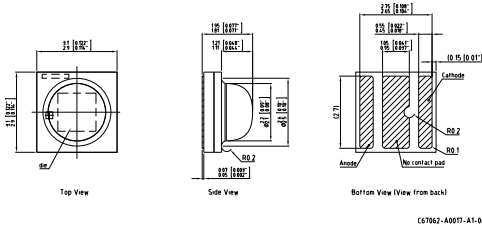
Technical Data	LR CPDP	LH CPDP
Emission color	● 623 nm	● 640 nm
Intensity	PhiV [mlm] = 56300 ... 71000	PhiE [mW] = 315 ... 400
Viewing angle at 50 % I _v 2φ (typ.)	150 °	
Package	SMT ceramic package with silicone resin and silicone lens	
Ordering Codes		
LR CPDP-JSJU-1	Q65111A2176	
LR CPDP-JRJT-1	Q65111A2056	
LH CPDP-2T3T-1		Q65111A1765

OSLO Square



Higher performance. Lower thermal resistance. Extended range of driving conditions. This is the second generation OSLO Square.

Package Outline

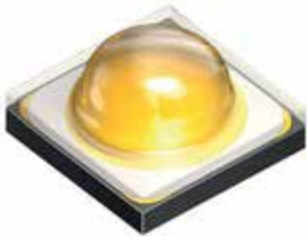


Packing unit

12 mm tape with 600 pcs. on Ø 180 mm reel

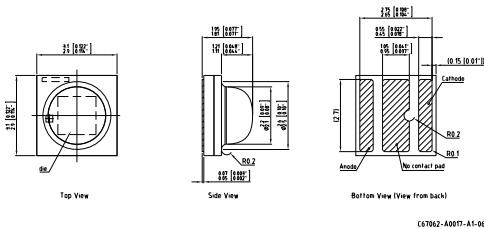
Technical Data	GW CSSRM1.CC
Emission color	white
CRI	min. 90 (typ. 92)
Min. Luminous Flux/Intensity	164 lm
Viewing angle at 50 % I_v 2φ (typ.)	120 °
Package	SMT ceramic package with silicone resin and silicone lens
Ordering Codes	
GW CSSRM1.CC-LUMQ-5U8X-1	Q65111A5851 (2700K)
GW CSSRM1.CC-MPMR-5R8T-1	Q65111A6748 (3000K)
GW CSSRM1.CC-MQMS-5O8Q-1	Q65111A6746 (3500K)
GW CSSRM1.CC-MQMS-5L7N-1	Q65111A5848 (4000K)

OSLON Square



Higher performance. Lower thermal resistance. Extended range of driving conditions. This is the second generation OSLON Square.

Package Outline

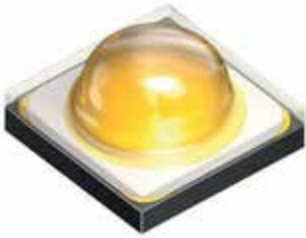


Packing unit

12 mm tape with 600 pcs. on Ø 180 mm reel

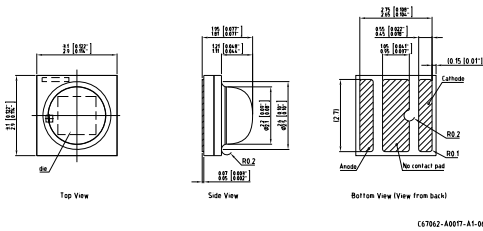
Technical Data	GW CSSRM1.EC
Emission color	○ white
CRI	min. 80 (typ. 82)
Min. Luminous Flux/Intensity	180 lm
Viewing angle at 50 % I_v 2φ (typ.)	120 °
Package	SMT ceramic package with silicone resin and silicone lens
Ordering Codes	
GW CSSRM1.EC-MPMR-5YC8-1	Q65111A6752 (2400K)
GW CSSRM1.EC-MQMS-5U8X-1	Q65111A6751 (2700K)
GW CSSRM1.EC-MQMS-5R8T-1	Q65111A5485 (3000K)
GW CSSRM1.EC-MRMT-5O8Q-1	Q65111A6742 (3500K)
GW CSSRM1.EC-MSMU-5L7N-1	Q65111A6479 (4000K)
GW CSSRM1.EC-MSMU-5J7K-1	Q65111A6749 (4500K)
GW CSSRM1.EC-MSMU-5H71-1	Q65111A6741 (5000K)

OSLON Square



Higher performance. Lower thermal resistance. Extended range of driving conditions. This is the second generation OSLON Square.

Package Outline



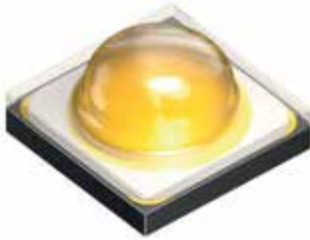
Packing unit

12 mm tape with 600 pcs. on Ø 180 mm reel

Technical Data	GW CSSRM1.PC
Emission color	white
CRI	min. 70 (typ. 72)
Min. Luminous Flux/Intensity	224 lm
Viewing angle at 50 % I_v 2φ (typ.)	120 °
Package	SMT ceramic package with silicone resin and silicone lens
Ordering Codes	
GW CSSRM1.PC-MSMU-5R8T-1	Q65111A5846 (3000K)
GW CSSRM1.PC-MTNP-5O8Q-1	Q65111A6761 (3500K)
GW CSSRM1.PC-MTNP-5L7N-1	Q65111A5843 (4000K)
GW CSSRM1.PC-MTNP-5J7K-1	Q65111A5844 (4500K)
GW CSSRM1.PC-MTNP-5H7I-1	Q65111A5845 (5000K)
GW CSSRM1.PC-MTNQ-5F7G-1	Q65111A5841 (5700K)
GW CSSRM1.PC-MTNQ-5C7E-1	Q65111A5842 (6500K)

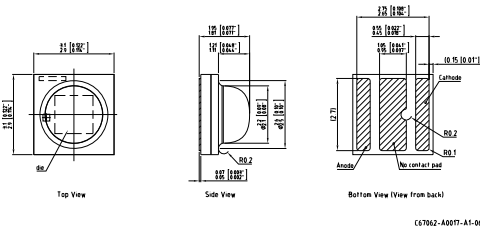
Technical Data	LCW CQAR.EC	LCW CQAR.EC
Emission color	○ warm white	○ warm and neutral white
CRI		min. 80 (typ. 83)
Min. Luminous Flux/Intensity	210 lm	164 lm
Viewing angle at 50 % I _v 2φ (typ.)		120 °
Package	SMT ceramic package with silicone resin and silicone lens	
Ordering Codes		
LCW CQAR.EC-MRMT-5O8Q-1	Q65111A2744 (3500K)	
LCW CQAR.EC-MQMS-5O8Q-1	Q65111A2745 (3500K)	
LCW CQAR.EC-MRMT-5R8T-1	Q65111A2743 (3000K)	
LCW CQAR.EC-MQMS-5R8T-1	Q65111A2119 (3000K)	
LCW CQAR.EC-MQMT-5U8X-1	Q65111A2741 (2700K)	
LCW CQAR.EC-MPMR-5U8X-1	Q65111A2686 (2700K)	
LCW CQAR.EC-MQMS-5YC8-1	Q65111A3016 (2400K)	
LCW CQAR.EC-MPMR-5YC8-1	Q65111A3013 (2400K)	
LCW CQAR.EC-LUMQ-5YC8-1		Q65111A3017 (2400K)
LCW CQAR.EC-LTMP-5YC8-1		Q65111A4133 (2400K)

OSLO Square



This most compact high-power LED (2 W class) allows dense clustering and simple circuit designs. Its extremely low thermal resistance helps to keep the efficiency remarkably high even when driven at high currents. High reliability. Long lifetime.

Package Outline



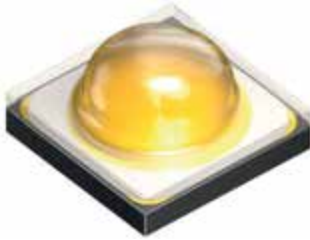
Packing unit

12 mm tape with 600 pcs. on \varnothing 180 mm reel

Technical Data	LCW CQAR.PC	LCW CQAR.PC
Emission color	<input type="radio"/> warm, neutral and cool white	<input type="radio"/> neutral white
CRI	min. 70 (typ. 72)	
Min. Luminous Flux/Intensity	259 lm	
Viewing angle at 50 % I _v 2φ (typ.)	120 °	
Package	SMT ceramic package with silicone resin and silicone lens	
Ordering Codes		
LCW CQAR.PC-MUNQ-5C7E-1	Q65111A4578 (6500K)	
LCW CQAR.PC-MTNP-5C7E-1	Q65111A4581 (6500K)	
LCW CQAR.PC-MUNQ-5F7G-1	Q65111A4514 (5700K)	
LCW CQAR.PC-MTNP-5F7G-1	Q65111A4515 (5700K)	
LCW CQAR.PC-MTNP-5O8Q-1	Q65111A4580 (3500K)	
LCW CQAR.PC-MSMU-5O8Q-1	Q65111A4577 (3500K)	
LCW CQAR.PC-MTNP-5R8T-1	Q65111A4579 (3000K)	
LCW CQAR.PC-MSMU-5R8T-1	Q65111A4582 (3000K)	
LCW CQAR.PC-MUNQ-5H7I-1	Q65111A2867 (5000K)	
LCW CQAR.PC-MTNP-5H7I-1	Q65111A2541 (5000K)	
LCW CQAR.PC-MUNQ-5J7K-1	Q65111A2889 (4500K)	
LCW CQAR.PC-MTNP-5J7K-1	Q65111A2869 (4500K)	
LCW CQAR.PC-MUNQ-5L7N-1	Q65111A2740 (4000K)	
LCW CQAR.PC-MTNP-5L7N-1	Q65111A2684 (4000K)	

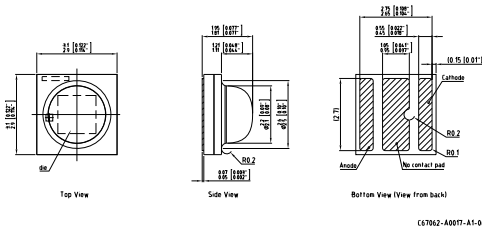
Technical Data	LUW CQAR (streetwhite)
Emission color	○ streetwhite
CRI	typ. 70
Min. Luminous Flux/Intensity	280 lm
Viewing angle at 50 % I _v 2φ (typ.)	120 °
Package	SMT ceramic package with silicone resin and silicone lens
Ordering Codes	
LUW CQAR-NPNR-HPHR-1	Q65111A3107 (6500K)
LUW CQAR-MUNQ-HPHR-1	Q65111A2736 (6500K)
LUW CQAR-MTNP-HPHR-1	Q65111A2735 (6500K)
LUW CQAR-MSMU-HPHR-1	Q65111A2734 (6500K)
LUW CQAR-NPNR-HPJR-1	Q65111A3106 (6000K)
LUW CQAR-MUNQ-HPJR-1	Q65111A2538 (6000K)
LUW CQAR-MRMT-HPJR-1	Q65111A1661 (6000K)
LUW CQAR-MSMU-HPJR-1	Q65111A2732 (6000K)
LUW CQAR-MTNP-HPJR-1	Q65111A2733 (6000K)
LUW CQAR-MSMU-JPJJR-1	Q65111A2158 (5700K)
LUW CQAR-NPNR-JPJJR-1	Q65111A3105 (5700K)
LUW CQAR-MUNQ-JPJJR-1	Q65111A2739 (5700K)
LUW CQAR-MTNP-JPJQ-1	Q65111A2539 (6500K)

OSLO Square



This most compact high-power LED (2 W class) allows dense clustering and simple circuit designs. Its extremely low thermal resistance helps to keep the efficiency remarkably high even when driven at high currents. High reliability. Long lifetime.

Package Outline



Packing unit

12 mm tape with 600 pcs. on Ø 180 mm reel

Technical Data	LUW CQAR (EQW)
Emission color	○ EQ white
CRI	typ. 65
Min. Luminous Flux/Intensity	304 lm
Viewing angle at 50 % I _v 2φ (typ.)	120 °
Package	SMT ceramic package with silicone resin and silicone lens
Ordering Codes	
LUW CQAR-NQNS-MMMW-1	Q65111A3111
LUW CQAR-NPNR-MMMW-1	Q65111A3110
LUW CQAR-NQNS-MCML-1	Q65111A3108
LUW CQAR-NPNR-MCML-1	Q65111A3109
LUW CQAR-MTNP-MJMW-1	Q65111A2768

Technical Data	GW KAJRB2.EM	GW KAJRB2.EM	GW KAJRB2.EM
Emission color	○ cool white	○ neutral white	○ warm white
CRI	min. 80 (typ. 85)		
Min. Luminous Flux/Intensity	2800 lm	2800 lm	2590 lm
Viewing angle at 50 % I _v 2φ (typ.)	120 °		
Package	Chip-on-Board		
Ordering Codes			
GW KAJRB2.EM-TPTR-65H4	Q65111A2520 (6500K)		
GW KAJRB2.EM-TPTR-57H4	Q65111A2519 (5700K)		
GW KAJRB2.EM-TPTR-50H4		Q65111A2518 (5000K)	
GW KAJRB2.EM-TPTR-40H4		Q65111A2517 (4000K)	
GW KAJRB2.EM-SUTQ-30H4			Q65111A2516 (3000K)
GW KAJRB2.EM-STTQ-27H4			Q65111A2515 (2700K)

Technical Data	GW KALRB3.EM	GW KALRB3.EM	GW KALRB3.EM
Emission color	<input type="radio"/> cool white	<input type="radio"/> neutral white	<input type="radio"/> warm white
CRI	min. 80 (typ. 85)		
Min. Luminous Flux/Intensity	4190 lm	4190 lm	3590 lm
Viewing angle at 50 % I _v 2φ (typ.)	120 °		
Package	Chip-on-Board		
Ordering Codes			
GW KALRB3.EM-TUUQ-65H4	Q65111A2526 (6500K)		
GW KALRB3.EM-TUUQ-57H4	Q65111A2525 (5700K)		
GW KALRB3.EM-TUUQ-50H4		Q65111A2524 (5000K)	
GW KALRB3.EM-TUUQ-40H4		Q65111A2523 (4000K)	
GW KALRB3.EM-TSTU-30H4			Q65111A2522 (3000K)
GW KALRB3.EM-TSTU-27H4			Q65111A2521 (2700K)

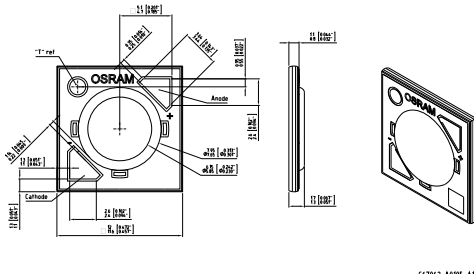
SOLERIQ P

SOLERIQ P 6



With its high luminance the SOLERIQ® P 6 is the ideal LED for all kind of directional applications like spot lights or directional retrofits. To make system designs easy, the SOLERIQ® P 6 has only a single flux and color bin and is specified at 85 °C to mimic the temperatures typically found in directional applications. The small light emitting surface of only 6 mm diameter enables system designs with very small optics and world class center beam candle-power (CBCP). Hence only one SOLERIQ® P 6 can replace a traditional 35 W HID lamp while maintaining a compact form factor.

Package Outline



Packing unit

Min. 160 pcs. per packing unit (80 units per tray, min. 2 trays per vacuum bag)

CS7002_A0705-A1_04

Technical Data	GW MAEGB1.CM	GW MAEGB1.CM
Emission color	<input type="radio"/> warm white	<input type="radio"/> neutral white
CRI		min. 90 (typ. 95)
Min. Luminous Flux/Intensity	610 lm	710 lm
Viewing angle at 50 % I _v 2φ (typ.)		120 °
Package		Chip-on-Board
Ordering Codes		
GW MAEGB1.CM-PTQQ-27S3	Q65111A5425 (2700K)	
GW MAEGB1.CM-PUQR-30S3	Q65111A5424 (3000K)	
GW MAEGB1.CM-PUQR-35S3	Q65111A5423 (3500K)	
GW MAEGB1.CM-QPQS-40S3		Q65111A5422 (4000K)

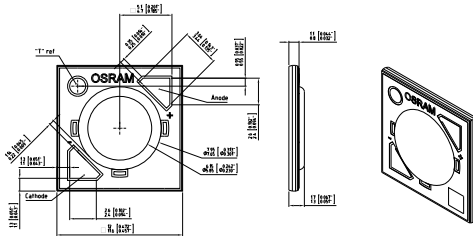
SOLERIQ P

SOLERIQ P 6



With its high luminance the SOLERIQ® P 6 is the ideal LED for all kind of directional applications like spot lights or directional retrofits. To make system designs easy, the SOLERIQ® P 6 has only a single flux and color bin and is specified at 85 °C to mimic the temperatures typically found in directional applications. The small light emitting surface of only 6 mm diameter enables system designs with very small optics and world class center beam candlepower (CBCP). Hence only one SOLERIQ® P 6 can replace a traditional 35 W HID lamp while maintaining a compact form factor.

Package Outline



Packing unit

Min. 160 pcs. per packing unit (80 units per tray, min. 2 trays per vacuum bag)

Technical Data	GW MAEGB1.EM	GW MAEGB1.EM
Emission color	<input type="radio"/> warm white	<input type="radio"/> neutral white
CRI	min. 80 (typ. 82)	
Min. Luminous Flux/Intensity	710 lm	820 lm
Viewing angle at 50 % I _v 2φ (typ.)	120 °	
Package	Chip-on-Board	
Ordering Codes		
GW MAEGB1.EM-QPQS-27S3	Q65111A5421 (2700K)	
GW MAEGB1.EM-QQQT-30S3	Q65111A5420 (3000K)	
GW MAEGB1.EM-QQQT-35S3	Q65111A5419 (3500K)	
GW MAEGB1.EM-QRQU-40S3	Q65111A5381 (4000K)	
GW MAEGB1.EM-QRQU-50S3	Q65111A5380 (5000K)	

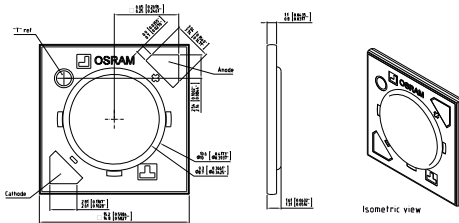
SOLERIQ P

SOLERIQ P 9



To make system designs easy, the SOLERIQ® P 9 has only a single flux and color bin and is specified at 85 °C to mimic the temperatures typically found in directional applications. The small light emitting surface of only 9 mm diameter enables system designs with very small optics and world class center beam candlepower (CBCP). Hence only one SOLERIQ® P 9 can replace a traditional 35 W HID lamp while maintaining a compact form factor.

Package Outline



C67062-A0101-A1-05

Packing unit

Min. 120 pcs. per packing unit (60 units per tray, min. 2 trays per vacuum bag)

Technical Data	GW MAFJB1.CM	GW MAFJB1.CM
Emission color	○ neutral white	○ warm white
CRI		min. 90 (typ. 95)
Min. Luminous Flux/Intensity	1640 lm	1500 lm
Viewing angle at 50 % I _v 2φ (typ.)		120 °
Package		Chip-on-Board
Ordering Codes		
GW MAFJB1.CM-RUSS-40S3	Q65111A5056 (4000K)	
GW MAFJB1.CM-RTSR-35S3		Q65111A5055 (3500K)
GW MAFJB1.CM-RTSQ-30S3		Q65111A5054 (3000K)
GW MAFJB1.CM-RSSP-27S3		Q65111A5057 (2700K)

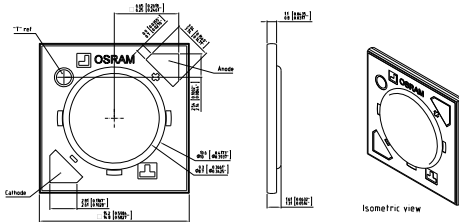
SOLERIQ P

SOLERIQ P 9



To make system designs easy, the SOLERIQ® P 9 has only a single flux and color bin and is specified at 85 °C to mimic the temperatures typically found in directional applications. The small light emitting surface of only 9 mm diameter enables system designs with very small optics and world class center beam candlepower (CBCP). Hence only one SOLERIQ® P 9 can replace a traditional 35 W HID lamp while maintaining a compact form factor.

Package Outline



C67062-A0101-A1-05

Packing unit

Min. 120 pcs. per packing unit (60 units per tray, min. 2 trays per vacuum bag)

Technical Data	GW MAFJB1.EM	GW MAFJB1.EM
Emission color	○ neutral white	○ warm white
CRI		min. 80 (typ. 82)
Min. Luminous Flux/Intensity	1800 lm	1640 lm
Viewing angle at 50 % I _v 2φ (typ.)		120 °
Package		Chip-on-Board
Ordering Codes		
GW MAFJB1.EM-SPST-50S3	Q65111A4973 (5000K)	
GW MAFJB1.EM-SPST-40S3	Q65111A4974 (4000K)	
GW MAFJB1.EM-RUSS-35S3		Q65111A4975 (3500K)
GW MAFJB1.EM-RUSR-30S3		Q65111A4976 (3000K)
GW MAFJB1.EM-RTSQ-27S3		Q65111A4977 (2700K)

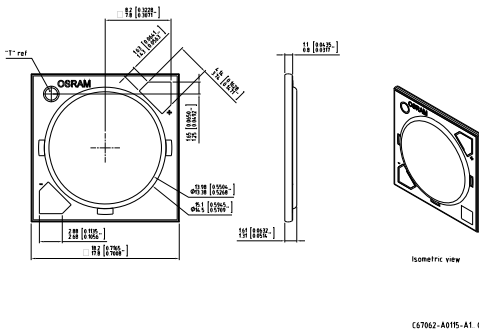
SOLERIQ P

SOLERIQ P 13



To make system designs easy, the SOLERIQ® P 13 has only a single flux and color bin and is specified at 85 °C to mimic the temperatures typically found in directional applications. The small light emitting surface of only 13.5 mm diameter enables system designs with very small optics and world class center beam candlepower (CBCP). Hence only one SOLERIQ® P 13 can replace a traditional 50 W HID lamp while maintaining a compact form factor.

Package Outline



Packing unit

Min. 96 pcs. per packing unit (48 units per tray, min. 2 trays per vacuum bag)

Technical Data	GW MAGMB1.CM	GW MAGMB1.CM
Emission color	○ warm white	○ neutral white
CRI		min. 90 (typ. 95)
Min. Luminous Flux/Intensity	2590 lm	3040 lm
Viewing angle at 50 % I _v 2φ (typ.)		120 °
Package		Chip-on-Board
Ordering Codes		
GW MAGMB1.CM-SUTR-27S3	Q65111A5832 (2700K)	
GW MAGMB1.CM-TPTS-30S3	Q65111A5831 (3000K)	
GW MAGMB1.CM-TPTS-35S3	Q65111A5830 (3500K)	
GW MAGMB1.CM-TQTT-40S3		Q65111A5829 (4000K)

Technical Data	GW MAGMB1.EM	GW MAGMB1.EM
Emission color	○ warm white	○ neutral white
CRI		min. 80 (typ. 82)
Min. Luminous Flux/Intensity	3040 lm	3590 lm
Viewing angle at 50 % I _v 2φ (typ.)		120 °
Package		Chip-on-Board
Ordering Codes		
GW MAGMB1.EM-TQTT-27S3	Q65111A5877 (2700K)	
GW MAGMB1.EM-TRTU-30S3	Q65111A5828 (3000K)	
GW MAGMB1.EM-TSUP-35S3	Q65111A5827 (3500K)	
GW MAGMB1.EM-TSUP-40S3		Q65111A5826 (4000K)
GW MAGMB1.EM-TSUP-50S3		Q65111A5825 (5000K)

Technical Data	GW KAGHB1.EM	GW KAGHB1.EM	GW KAGHB1.EM
Emission color	○ cool white	○ neutral white	○ warm white
CRI	min. 80 (typ. 85)		
Min. Luminous Flux/Intensity	1500 lm	1500 lm	1400 lm
Viewing angle at 50 % I _v 2φ (typ.)	120 °		
Package	Chip-on-Board		
Ordering Codes			
GW KAGHB1.EM-RTSP-65H3	Q65111A4641 (6500K)		
GW KAGHB1.EM-RTSP-57H3	Q65111A4640 (5700K)		
GW KAGHB1.EM-RTSP-50H3		Q65111A4642 (5000K)	
GW KAGHB1.EM-RTSP-40H3		Q65111A4643 (4000K)	
GW KAGHB1.EM-RSRU-30H3			Q65111A4644 (3000K)
GW KAGHB1.EM-RRRU-27H3			Q65111A4645 (2700K)

Technical Data	GW KAGHB1.CM	GW KAGHB1.CM
Emission color	○ warm white	○ neutral white
CRI		min. 90 (typ. 95)
Min. Luminous Flux/Intensity	1210 lm	1400 lm
Viewing angle at 50 % I _v 2φ (typ.)		120 °
Package		Chip-on-Board
Ordering Codes		
GW KAGHB1.CM-RQRT-27H3	Q65111A5703 (2700K)	
GW KAGHB1.CM-RRRT-30H3	Q65111A5702 (3000K)	
GW KAGHB1.CM-RSRU-40H3		Q65111A5701 (4000K)

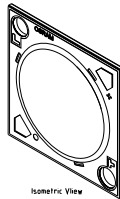
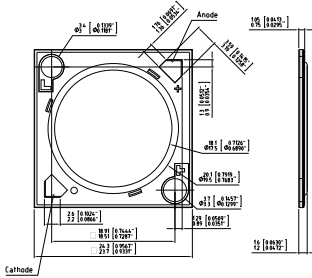
SOLERIQ S

SOLERIQ S 19

The SOLERIQ® S products were specifically designed for applications requiring large flux packages out of a compact area.



Package Outline



(3762-0993)-A1.11

Packing unit

Min. 40 pcs. per packing unit (20 units per tray, min. 2 trays per vacuum bag)

Technical Data	GW KAHLB1.EM	GW KAHLB1.EM
Emission color	○ neutral white	○ warm white
CRI		min. 80 (typ. 82)
Min. Luminous Flux/Intensity		3300 lm
Viewing angle at 50 % I _v 2φ (typ.)		120 °
Package		Chip-on-Board
Ordering Codes		
GW KAHLB1.EM-TRTU-40S3	Q65111A4684 (4000K)	
GW KAHLB1.EM-TRTT-35S3		Q65111A4685 (3500K)
GW KAHLB1.EM-TQTT-30S3		Q65111A4686 (3000K)
GW KAHLB1.EM-TQTS-27S3		Q65111A4687 (2700K)

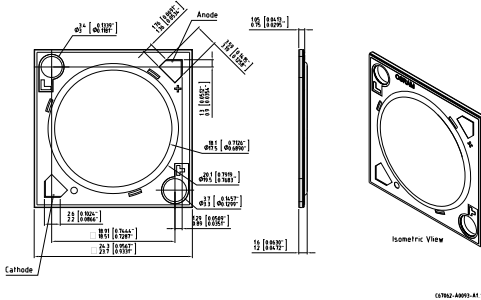
SOLERIQ S

SOLERIQ S 19

The SOLERIQ® S products were specifically designed for applications requiring large flux packages out of a compact area.



Package Outline



Packing unit

Min. 40 pcs. per packing unit (20 units per tray, min. 2 trays per vacuum bag)

Technical Data	GW KAHLB1.CM	GW KAHLB1.CM
Emission color	○ warm white	○ neutral white
CRI		min. 90
Min. Luminous Flux/Intensity	2590 lm	3040 lm
Viewing angle at 50 % I _v 2φ (typ.)		120 °
Package		Chip-on-Board
Ordering Codes		
GW KAHLB1.CM-SUTQ-27S3	Q65111A6393 (2700K)	
GW KAHLB1.CM-TPTR-30S3	Q65111A6378 (3000K)	
GW KAHLB1.CM-TPTR-35S3	Q65111A6377 (3500K)	
GW KAHLB1.CM-TQTS-40S3		Q65111A6376 (4000K)

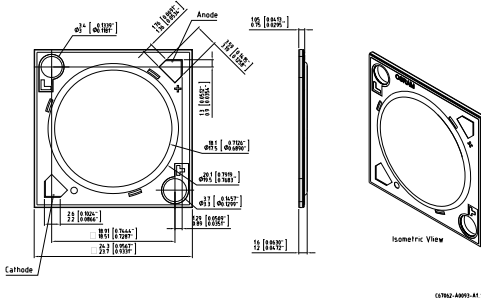
SOLERIQ S

SOLERIQ S 19

The SOLERIQ® S products were specifically designed for applications requiring large flux packages out of a compact area.



Package Outline



Packing unit

Min. 40 pcs. per packing unit (20 units per tray, min. 2 trays per vacuum bag)

Technical Data	GW KAHJB1.EM	GW KAHJB1.EM
Emission color	○ warm white	○ neutral white
CRI		min. 80 (typ. 82)
Min. Luminous Flux/Intensity	2240 lm	2400 lm
Viewing angle at 50 % I _v 2φ (typ.)		120 °
Package		Chip-on-Board
Ordering Codes		
GW KAHJB1.EM-SSSU-27S3	Q65111A5691 (2700K)	
GW KAHJB1.EM-SSSU-30S3	Q65111A5215 (3000K)	
GW KAHJB1.EM-STTP-35S3	Q65111A5214 (3500K)	
GW KAHJB1.EM-STTP-40S3		Q65111A5213 (4000K)

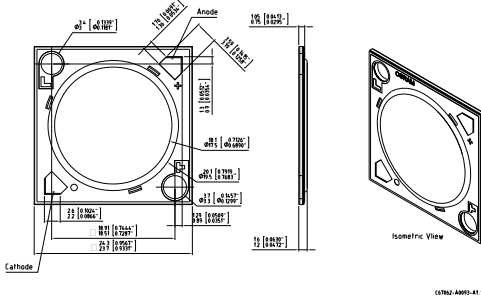
SOLERIQ S

SOLERIQ S 19

The SOLERIQ® S products were specifically designed for applications requiring large flux packages out of a compact area.



Package Outline



Packing unit

Min. 40 pcs. per packing unit (20 units per tray, min. 2 trays per vacuum bag)

Technical Data	GW KAHJB1.CM	GW KAHJB1.CM
Emission color	○ warm white	○ neutral white
CRI		min. 90
Min. Luminous Flux/Intensity	1940 lm	2100 lm
Viewing angle at 50 % I _v 2φ (typ.)		120 °
Package		Chip-on-Board
Ordering Codes		
GW KAHJB1.CM-SQSS-27S3	Q65111A6453 (2700K)	
GW KAHJB1.CM-SQSS-30S3	Q65111A6381 (3000K)	
GW KAHJB1.CM-SRST-35S3	Q65111A6395 (3500K)	
GW KAHJB1.CM-SRST-40S3		Q65111A6394 (4000K)

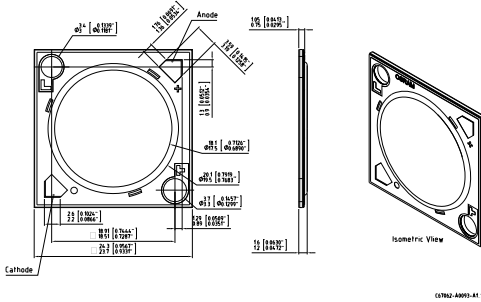
SOLERIQ S

SOLERIQ S 19

The SOLERIQ® S products were specifically designed for applications requiring large flux packages out of a compact area.



Package Outline



Packing unit

Min. 40 pcs. per packing unit (20 units per tray, min. 2 trays per vacuum bag)

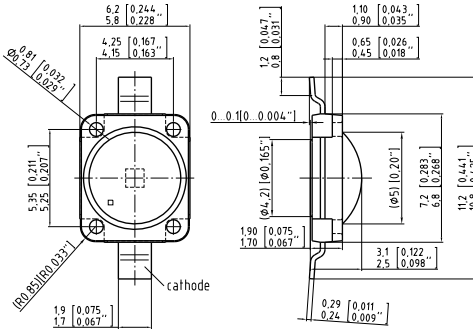
Technical Data	GW KAHNB1.EM	GW KAHNB1.EM
Emission color	○ warm white	○ neutral white
CRI		min. 80 (typ. 82)
Min. Luminous Flux/Intensity	4190 lm	4500 lm
Viewing angle at 50 % I _v 2φ (typ.)		120 °
Package		Chip-on-Board
Ordering Codes		
GW KAHNB1.EM-TU0Q-27S3	Q65111A5836 (2700K)	
GW KAHNB1.EM-TUUR-30S3	Q65111A5835 (3000K)	
GW KAHNB1.EM-UPUR-35S3	Q65111A5834 (3500K)	
GW KAHNB1.EM-UPUS-40S3		Q65111A5833 (4000K)

Golden DRAGON Plus white



This Golden DRAGON® family member allows the design of small size high brightness light sources, while meeting highest lifetime requirements.

Package Outline



63062-AA005-A1 -06

Packing unit

24 mm tape with 200 pcs. on Ø 180 mm reel, 1200 pcs. on Ø 330 mm reel

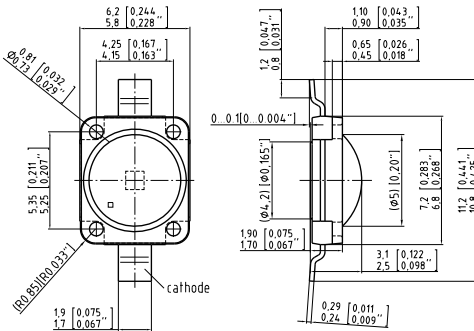
Technical Data	LCW W5AM	LCW W5AM
Emission color	○ neutral white	○ warm white
CRI		typ. 80
Min. Luminous Flux/Intensity	82 lm	
Viewing angle at 50 % I _v 2φ (typ.)		170 °
Package	white SMT package with clear silicone lens chip level conversion	
Ordering Codes		
LCW W5AM-KYLX-5H7I	Q65111A1776 (5000K)	
LCW W5AM-KYKZ-4J8K	Q65111A3470 (4500K)	
LCW W5AM-KYKZ-4L8N	Q65110A8828 (4000K)	
LCW W5AM-KYKZ-4O9Q		Q65111A4824 (3500K)
LCW W5AM-KXKY-409Q		Q65110A8837 (3500K)
LCW W5AM-KYKZ-4R9T		Q65111A2915 (3000K)
LCW W5AM-KXKY-4R9T		Q65110A8169 (3000K)
LCW W5AM-KXKY-4U8X		Q65110A9811 (2700K)
LCW W5AM-JZKY-4U9X		Q65110A9535 (2700K)

Golden DRAGON Plus white



This Golden DRAGON® family member allows the design of small size high brightness light sources, while meeting highest lifetime requirements.

Package Outline







C63062-A4-005-A1 -06

Packing unit

24 mm tape with 200 pcs. on Ø 180 mm reel, 1200 pcs. on Ø 330 mm reel

Technical Data		
Emission color	<input type="radio"/> ultra white	<input type="radio"/> cool white
CRI		
Min. Luminous Flux/Intensity	112 lm	97 lm
Viewing angle at 50 % I _v 2φ (typ.)	170 °	
Package	white SMT package with clear silicone lens chip level conversion	
Ordering Codes		
LUW W5AM-LXLY-6P7R	Q65110A8399 (6000K)	
LUW W5AM-KZLY-6P7R	Q65110A8397 (6000K)	
LUW W5AM-KYLX-6P7Q	Q65110A7564 (6000K)	
LUW W5AM-KZLX-4E8G	Q65110A9534	
LUW W5AM-KYLX-4E8G	Q65110A9533	
LUW W5AM-KZLY-5F8G-ZN	Q65110A8835 (5700K)	
LUW W5AM-KYLY-5F8G	Q65110A8833 (5700K)	
LUW W5AM-KZLX-4C8E	Q65110A9532	
LUW W5AM-KZLY-4C8E-ZN	Q65110A8834 (6500K)	
LUW W5AM-KYLX-4C8E	Q65110A9531 (6500K)	

Technical Data	LD W5AM	LB W5AM
Emission color	 455 nm	 470 nm
Intensity	PhiE [mW] = 450 ... 710	PhiV [mlm] = 24000 ... 33000
Viewing angle at 50 % I _v 2φ (typ.)	170 °	
Package	white SMT package with clear silicone lens chip level conversion	
Ordering Codes		
LD W5AM-1U4U-35	Q65111A3454	
LD W5AM-4T2U-35	Q65111A3453	
LB W5AM-GZHX-25		Q65110A9163
LB W5AM-GYHY-25		Q65110A8620

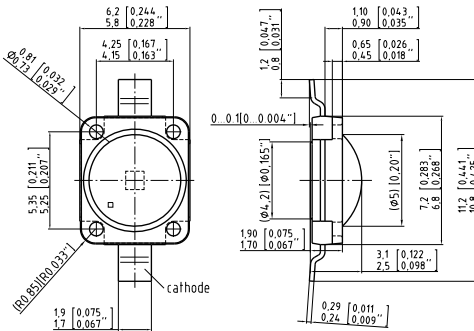
Technical Data	LV W5AM	LT W5AM
Emission color	 505 nm	 528 nm
Intensity	PhiV [mlm] = 61000 ... 112000	PhiV [mlm] = 97000 ... 150000
Viewing angle at 50 % I _v 2φ (typ.)	170 °	
Package	white SMT package with clear silicone lens chip level conversion	
Ordering Codes		
LV W5AM-JZKZ-25	Q65111A3689	
LV W5AM-JYKY-25	Q65110A9063	
LT W5AM-KZLY-36		Q65111A3585
LT W5AM-KYKZ-35		Q65110A9877

Golden DRAGON Plus color





This Golden DRAGON® family member allows the design of small size high brightness light sources, while meeting highest lifetime requirements.



Package Outline



C63062-A4-005-A1 -06

Packing unit
24 mm tape with

Technical Data	LY W5AM	LA W5AM
Emission color	 590 nm	 617 nm
Intensity	PhiV [mlm] = 52000 ... 82000	PhiV [mlm] = 61000 ... 97000
Viewing angle at 50 % I _v 2φ (typ.)	170 °	
Package	white SMT package with clear silicone lens chip level conversion	
Ordering Codes		
LY W5AM-JYKX-36	Q65111A3475	
LY W5AM-JXJY-36	Q65110A9337	
LA W5AM-JZKY-24		Q65111A1331
LA W5AM-JYKY-24		Q65111A0329

Technical Data	LR W5AM	LH W5AM
Emission color	 623 nm	 640 nm
Intensity	PhiV [mlm] = 52000 ... 82000	PhiE [mW] = 315 ... 400
Viewing angle at 50 % I _v 2φ (typ.)	170 °	
Package	white SMT package with clear silicone lens chip level conversion	
Ordering Codes		
LR W5AM-JYKX-1	Q65111A0903	
LR W5AM-JXJY-1	Q65110A9310	
LH W5AM-2T3T-1		Q65111A3474
LH W5AM 1T3T-1		Q65110A9422
LH W5AM-1T3T-1		Q65111A1589